



ICPM -INVESTMENT CO. FOR PRODUCTION &MANUFACTURING
ALMARASEM AFILLIATED COMPANY







INVESTMENT COMPANY FOR PRODUCTION & MANUFACTURING



ICPM INFO

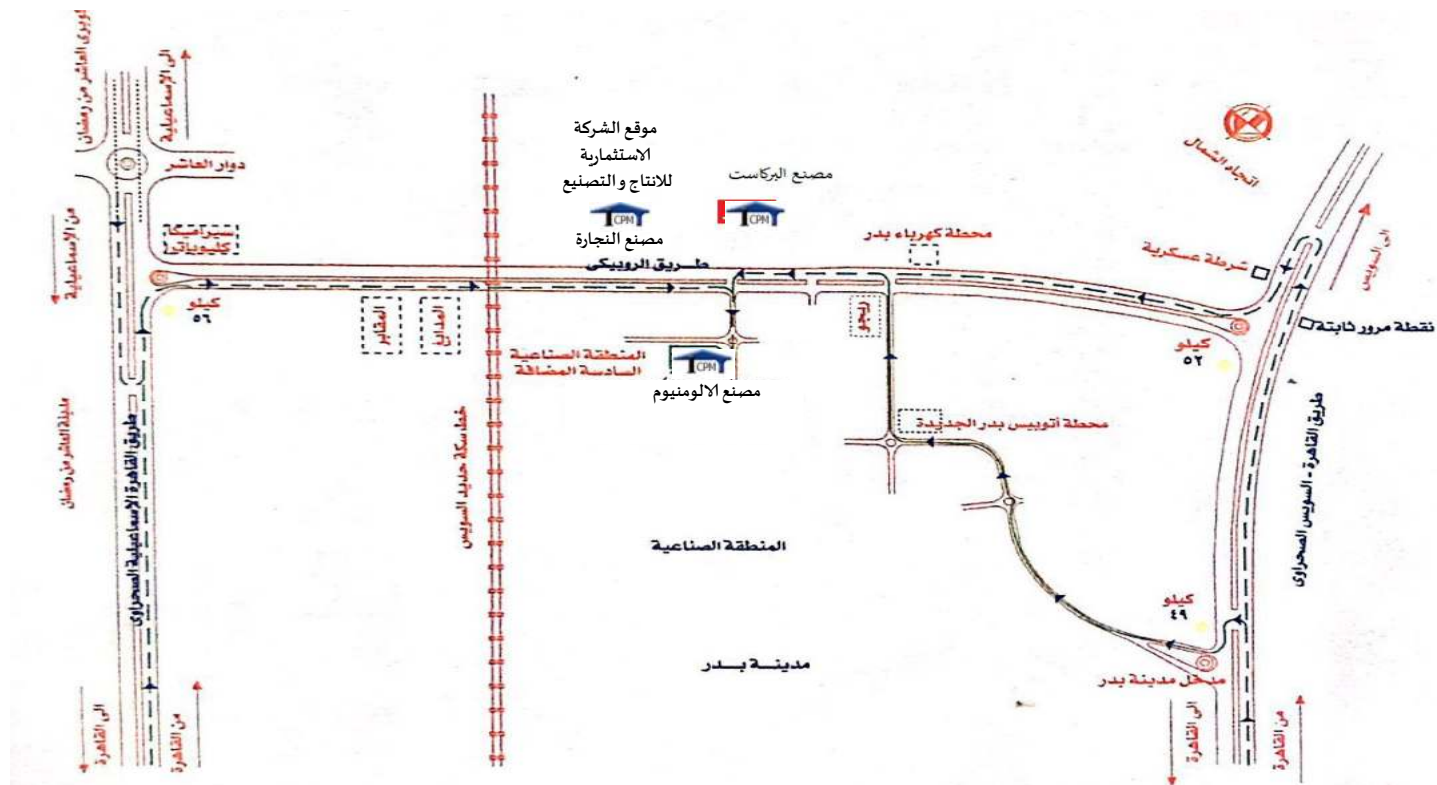


COMPANY NAME	INVESTMENT CO. FOR PRODUCTION & MANUFACTURING(ICPM(
Year of Establishment	JANUARY 1998
Legal Form:	PRIVATE JOINT STOCK COMPANY (SAE(AS PER THE PROVISIONS OF LAW 08 #of YEAR1997
Country of Registration/ Regis:# .	ARAB REPUBLIC OF EGYPT 380 /
Description of company core Business activities	ALUMINUM – STEEL –PRECAST –CEMENTITIOUS -WOODEN AND CARPENTRY
OfficeAddress(PLANTS):	(BADR CITY –INDUSTRIAL ZONE#) 6ROUBAIKY ROAD FROM CAIRO –SUEZ ROAD
Office Address (READY MIX CONCRETE SECTION):	PARCEL 77NEW CAIRO CITY, THIRD SETTLEMENT KAMAEN ELGEER DISTRICT, SOKHNA KATAMEYA ROAD.
Tel :	(202+) 23108095 - 23108236 - 23108378 - 23108376
Email:	infoicpmegypt@icpm-eg.com
ISO Certificates:	   

ICPM-Location

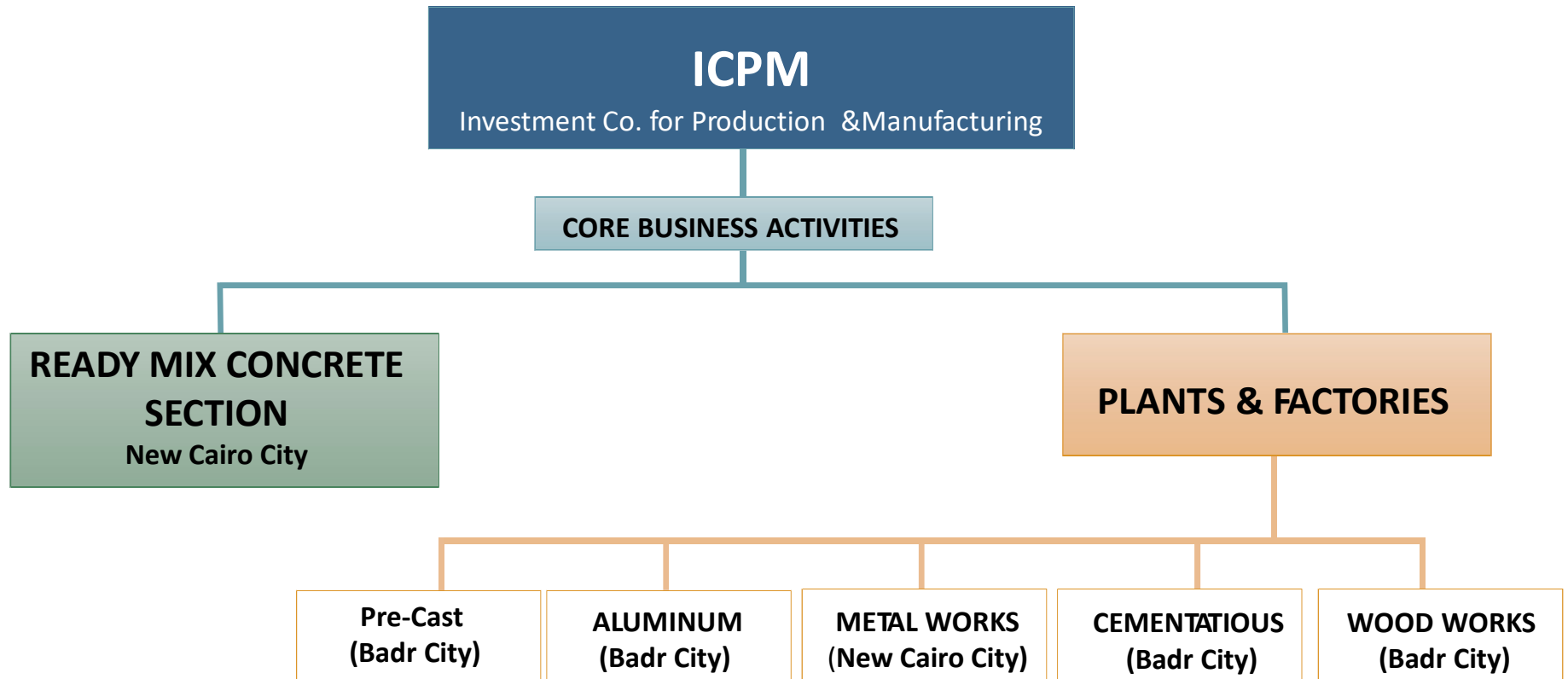


ALMARASEEM



INVESTMENT COMPANY FOR PRODUCTION & MANUFACTURING

ICPM – Core Business Activities





Quality Policy

Investment Company for Production & Manufacturing (ICPM) realizes its responsibilities to provide high quality services in many of Major Construction Projects in the Field of (Pre-cast concrete products, ready mix. Concrete, steel works, Aluminum works, Cementations block, Tile & Interlock & Wood works).

In order to support our services to satisfy our customers & meeting their expectations we are committed to:

- Establish, implement, maintain, and improve a quality management system to comply with the applicable requirements of International Standard ISO 9001/2010.
- Our culture is to move the emphasis from detection of defects to their prevention. ICPM has concentrated their efforts onto efficient planning and sourcing, with effective monitoring of events.
- Provide Framework to Establish and review quality objectives that communicate to the relevant levels and functions in the Company.
- Continually improve our performance by supporting the training activities, Conduct quality management system's internal audits & management review, besides establishment of data base for monitoring & measurement of customers' satisfaction services & processes, in addition to apply their data analysis, in order to take the appropriate corrective & preventive actions.



OCCUPATIONAL HEALTH, SAFETY & ENVIRONMENTAL POLICY

Investment Company for Production & Manufacturing (ICPM), as a one of leading companies in the Egyptian market in the field of (Pre-cast concrete products, ready mix. Concrete, steel works, Aluminum works, Cementations block, Tile & Interlock & Wood works).

And for the great attention paid by the company towards OCCUPATIONAL HEALTH, SAFETY & ENVIRONMENTAL; is undertaking to:

- Protecting the Environment from pollution inside the company, especially water pollution resulted from construction processes, the emissions generated from equipments exhaust, noises, and solid waste known by their adverse effects in the environment. ICPM is doing its best efforts to mitigate these effects by providing an environment free of health hazards that causing injuries to workers or publics as a result of work or occupational diseases.
- Recognizing the importance of consultation, communications and participation for effective management.
- Preventing incident and work related ill health, investigating any incidents that do occur and implementing any corrective actions identified.
- Following HSE procedures with all employees, suppliers, contractors & customers.
- Complying fully with all relevant HSE applicable laws, regulations, standards and other requirements.
- Providing the framework for setting and reviewing objectives & targets that can be measured to all activities related to HSE.
- Planning and implementing the HSE management system, regular internal audits and reviews by the top management.
- Commitment to continual improvement in implementation the methodology and plans against incidents and near misses and preventing pollution and environmental protection taking into account the.
- Commitment to follow the protective methods and eliminating or mitigating HSE risks. Where this is not possible the risk/hazard identified shall be controlled
- Encouraging all ICPM's employees, suppliers, contractors, customers to participate in this commitment.
- Ensuring visitors or members of the public are safeguarded from hazardous operations;
- Informing and promulgating all administrative departments, projects and other interested parties the contents of this policy.

For these, and to ensure the effective implementation of HSE objectives and continual improvement of HSE performance, we established HSE management system based upon the requirements of international standards, OHSAS 18001 :2007 & ISO 14001 :2004.

ICPM FACTORY

مصانع الشركة الاستثمارية للإنتاج و التصنيع



ICPM FACTORY



مصانع الشركة الاستثمارية للإنتاج و التصنيع





ICPM STEEL FACTORY



مصنع الاعمال المعدنية

يوجد بمصنع الاعمال المعدنية عدة اقسام

قسم الدهانات



قسم الابواب المقاومة و
الغير مقاومة للحريق



قسم المشغولات المعدنية



قسم الحديد الانشائي



INVESTMENT COMPANY FOR PRODUCTION & MANUFACTURING



ICPM STEEL FACTORY



ALMARASEM
DEVELOPMENT

مصنع الاعمال المعدنية

اولاً - قسم الاعمال الانشائية:

القسم الاول خاص بالاعمال الانشائية بمسطح حوالى ٢٥٥٠م^٢
بقدره انتاجية حوالى ٣٥٠٠ طن سنوياً.

INVESTMENT COMPANY FOR PRODUCTION & MANUFACTURING



ICPM STEEL FACTORY



ثانياً -قسم المشغولات المعدنية :

والقسم الثانى خاص بالمشغولات لمعدنية على مساحة تبلغ : ٢٢٠٠ م^٢
اضافة الى مقر ادارى للمصنع و يقوم المصنع على انتاج حوالى ٧٠ الف م.ط فى السنة
للمشغولات المعدنية



INVESTMENT COMPANY FOR PRODUCTION & MANUFACTURING



ICPM STEEL FACTORY



ALMARASEM
DEVELOPMENT

ثالثاً - قسم الابواب المقاومة و الغير مقاومة للحريق:
تم انشاء قسم خاص بالابواب المعدنية المقاومة للحريق و نهدف الى انتاج
عدد ٢٧٥٠ باب شهريا
كما نهدف الى العمل على فتح خط تصدير الابواب الى الخارج



INVESTMENT COMPANY FOR PRODUCTION & MANUFACTURING



ICPM STEEL PROJECTS



ALMARASEM
DEVELOPMENT



INVESTMENT COMPANY FOR PRODUCTION & MANUFACTURING



ICPM STEEL PROJECTS AIRPORT



INVESTMENT COMPANY FOR PRODUCTION & MANUFACTURING



ICPM STEEL PROJECTS
SHARM EL SHEIKH AIRPORT



مطار
شرم الشيخ

INVESTMENT COMPANY FOR PRODUCTION & MANUFACTURING



ICPM STEEL PROJECTS SHARM EL SHEIKH AIRPORT



AT SHARM EL SHEIKH AIRPORT	
Client	EGYPTIAN AIRPORTS COMPANY
Consultant	DAR AL HANDASAH MAA
Business Execution date	24 /Jun.2007
Project value	34,000,000 L.E
Project area	3000 sq. Meter



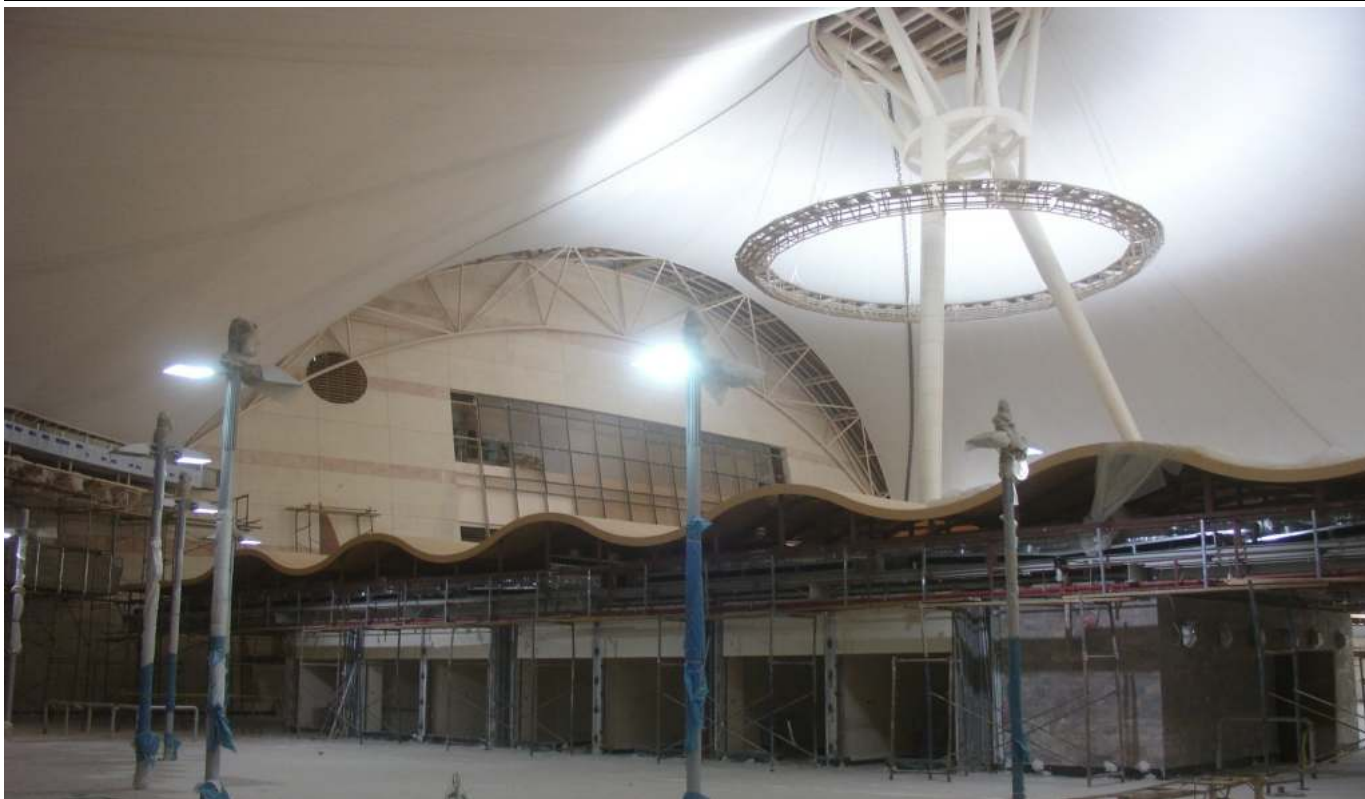
INVESTMENT COMPANY FOR PRODUCTION & MANUFACTURING



ICPM STEEL PROJECTS SHARM EL SHEIKH AIRPORT



Manufacture and installation of decorative chandelier at the airport



INVESTMENT COMPANY FOR PRODUCTION & MANUFACTURING



ICPM STEEL PROJECTS SHARM EL SHEIKH AIRPORT



Steel Air-Nozzles



INVESTMENT COMPANY FOR PRODUCTION & MANUFACTURING



ICPM STEEL PROJECTS SHARM EL SHEIKH AIRPORT



Manufacture and installation of decorative chandelier at the airport



INVESTMENT COMPANY FOR PRODUCTION & MANUFACTURING



ICPM STEEL PROJECTS SHARM EL SHEIKH AIRPORT



Steel Air-Nozzles



INVESTMENT COMPANY FOR PRODUCTION & MANUFACTURING



ICPM STEEL PROJECTS SHARM EL SHEIKH AIRPORT



Steel Air-Nozzles



INVESTMENT COMPANY FOR PRODUCTION & MANUFACTURING



ICPM STEEL PROJECTS SHARM EL SHEIKH AIRPORT



Steel Air-Nozzles



INVESTMENT COMPANY FOR PRODUCTION & MANUFACTURING



ICPM STEEL PROJECTS SHARM EL SHEIKH AIRPORT



Manufacture and installation of decorative chandelier at the airport



INVESTMENT COMPANY FOR PRODUCTION & MANUFACTURING



ICPM STEEL PROJECTS SHARM EL SHEIKH AIRPORT



Manufacture and installation of decorative chandelier at the airport



INVESTMENT COMPANY FOR PRODUCTION & MANUFACTURING



ICPM STEEL PROJECTS SHARM EL SHEIKH AIRPORT



Steel substructure for GRC



INVESTMENT COMPANY FOR PRODUCTION & MANUFACTURING



ICPM STEEL PROJECTS SHARM EL SHEIKH AIRPORT



Steel substructure for GRC



INVESTMENT COMPANY FOR PRODUCTION & MANUFACTURING



ICPM STEEL PROJECTS SHARM EL SHEIKH AIRPORT



Steel Air-Nozzles



INVESTMENT COMPANY FOR PRODUCTION & MANUFACTURING

ICPM – Ornamental steel Work
SHARM EL SHEIKH AIRPORT



INVESTMENT COMPANY FOR PRODUCTION & MANUFACTURING

ICPM – Ornamental steel Work
SHARM EL SHEIKH AIRPORT





ICPM STEEL PROJECTS
EL NOZHA AIRPORT



مطار النزهة

INVESTMENT COMPANY FOR PRODUCTION & MANUFACTURING



ICPM – Steel Structure System
EL Nozha airport



ALMARASEEM

Steel Cladding



INVESTMENT COMPANY FOR PRODUCTION & MANUFACTURING



ICPM –Steel Structure System
EL Nozha airport



ALMARASEM

Steel Cladding



INVESTMENT COMPANY FOR PRODUCTION & MANUFACTURING



ICPM – Steel Structure System
EL Nozha airport



ALMARASEM

Steel Cladding



INVESTMENT COMPANY FOR PRODUCTION & MANUFACTURING



ICPM – Steel Structure System
EL Nozha airport



ALMARASEEM

Steel Cladding



INVESTMENT COMPANY FOR PRODUCTION & MANUFACTURING



ICPM – Steel Structure System
EL Nozha airport



ALMARASEEM

Steel Cladding



INVESTMENT COMPANY FOR PRODUCTION & MANUFACTURING



ICPM – Steel Structure System
EL Nozha airport



ALMARASEEM

Steel Cladding



INVESTMENT COMPANY FOR PRODUCTION & MANUFACTURING



ICPM – Steel Structure System
EL Nozha airport



ALMARASEEM

Steel Cladding



INVESTMENT COMPANY FOR PRODUCTION & MANUFACTURING



ICPM – Steel Structure System
EL Nozha airport



ALMARASEM

Steel Cladding



INVESTMENT COMPANY FOR PRODUCTION & MANUFACTURING



ICPM –Steel Structure System
EL Nozha airport



ALMARASEEM

Steel Cladding



INVESTMENT COMPANY FOR PRODUCTION & MANUFACTURING

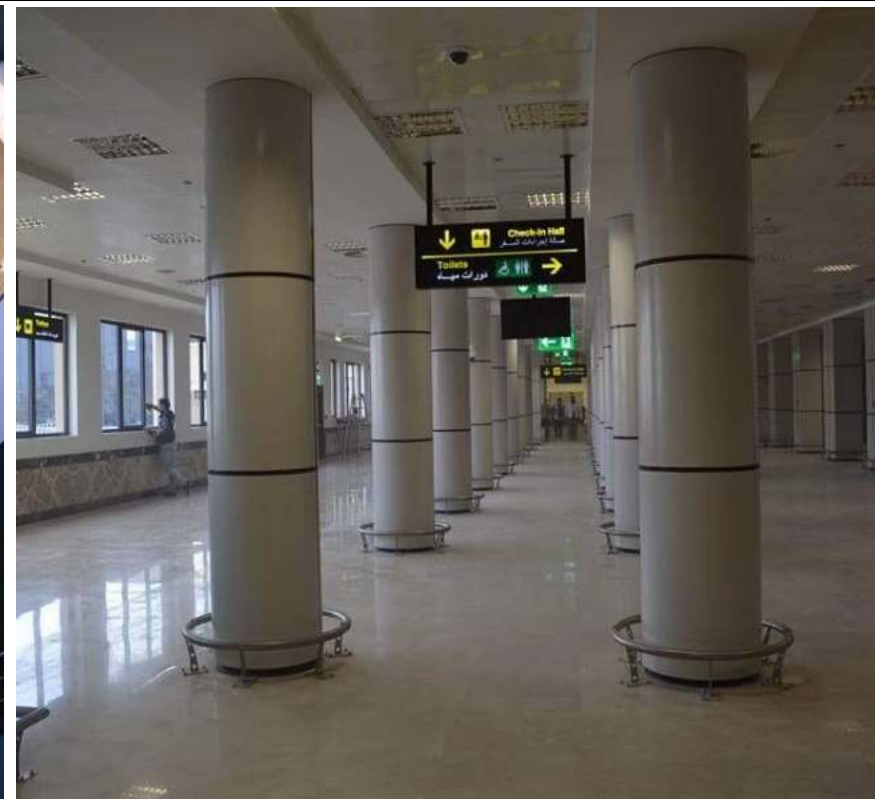


ICPM – Steel Structure System
EL Nozha airport



ALMARASEEM

Steel Cladding



INVESTMENT COMPANY FOR PRODUCTION & MANUFACTURING



ICPM –Steel Structure System
EL Nozha airport



ALMARASEEM

Steel Cladding



INVESTMENT COMPANY FOR PRODUCTION & MANUFACTURING



ICPM STEEL PROJECTS
CAIRO INTERNATIONAL AIRPORT



CAIRO INTERNATIONAL AIRPORT



INVESTMENT COMPANY FOR PRODUCTION & MANUFACTURING



ICPM STEEL PROJECTS CAIRO INTERNATIONAL AIRPORT



CAIRO INTERNATIONAL AIRPORT	
Client	CAIRO, EGYPT CAIRO AIRPORT COMPANY (CAC)
Consultant	EGMAA MAC
Business Execution date	12 /Des.2010
Project value	17,000,000 L.E
Project area	17,000 sq. Meter



INVESTMENT COMPANY FOR PRODUCTION & MANUFACTURING



ICPM STEEL PROJECTS CAIRO INTERNATIONAL AIRPORT



INVESTMENT COMPANY FOR PRODUCTION & MANUFACTURING



ICPM STEEL PROJECTS CAIRO INTERNATIONAL AIRPORT



Manufacture and installation of decorative Handrail for the train & rails



INVESTMENT COMPANY FOR PRODUCTION & MANUFACTURING



ICPM STEEL PROJECTS CAIRO INTERNATIONAL AIRPORT



Manufacture and installation of decorative Handrail for the train & rails



INVESTMENT COMPANY FOR PRODUCTION & MANUFACTURING



ICPM STEEL PROJECTS
HOTELS



ALMARASEM
DEVELOPMENT



INVESTMENT COMPANY FOR PRODUCTION & MANUFACTURING



ICPM STEEL PROJECTS
HOTELS



فندق مريديان المطار

INVESTMENT COMPANY FOR PRODUCTION & MANUFACTURING



ICPM STEEL PROJECTS LE MERDIAN HOTEL



Airotel canopy	
Client	LE MERDIAN - AEROTEL CAIRO INT. AIRPORT NEW HOTEL
Consultant	ECG
Business Execution date	8 /Aug.2013
Project value	1,700,000
Project area	190 sq. Meter



INVESTMENT COMPANY FOR PRODUCTION & MANUFACTURING



ICPM STEEL PROJECTS LE MERDIAN HOTEL



INVESTMENT COMPANY FOR PRODUCTION & MANUFACTURING



ICPM STEEL PROJECTS LE MERDIAN HOTEL



ALMARASEEM
DEVELOPMENT



INVESTMENT COMPANY FOR PRODUCTION & MANUFACTURING



ICPM STEEL PROJECTS LE MERDIAN HOTEL



INVESTMENT COMPANY FOR PRODUCTION & MANUFACTURING



ICPM STEEL PROJECTS LE MERDIAN HOTEL



INVESTMENT COMPANY FOR PRODUCTION & MANUFACTURING



ICPM STEEL PROJECTS LE MERDIAN HOTEL



INVESTMENT COMPANY FOR PRODUCTION & MANUFACTURING



ICPM STEEL PROJECTS LE MERDIAN HOTEL



INVESTMENT COMPANY FOR PRODUCTION & MANUFACTURING



ICPM STEEL PROJECTS LE MERDIAN HOTEL



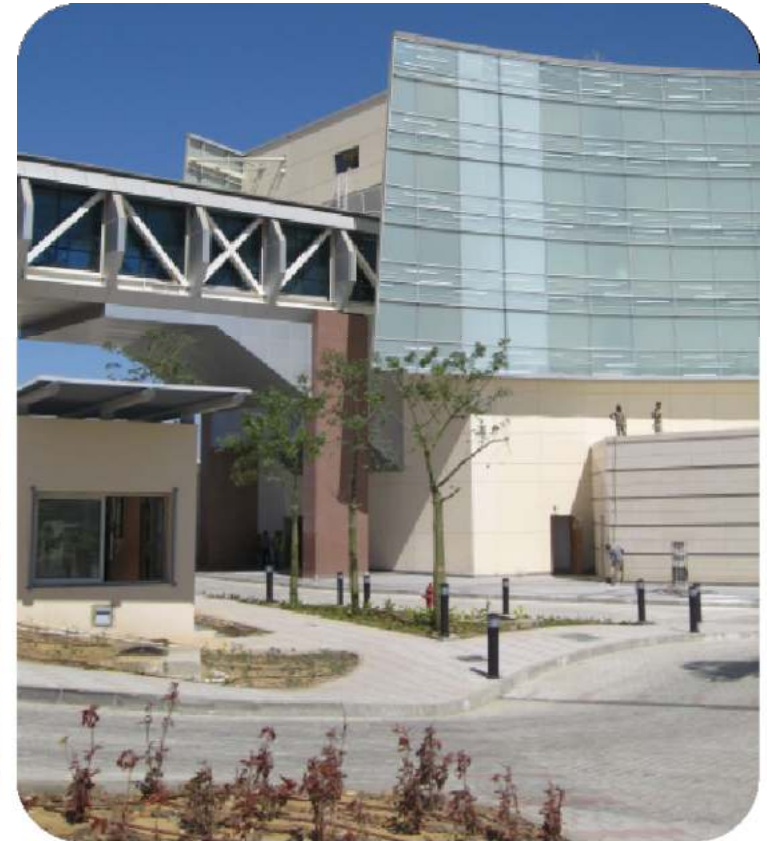
ALMARASEM
DEVELOPMENT



INVESTMENT COMPANY FOR PRODUCTION & MANUFACTURING



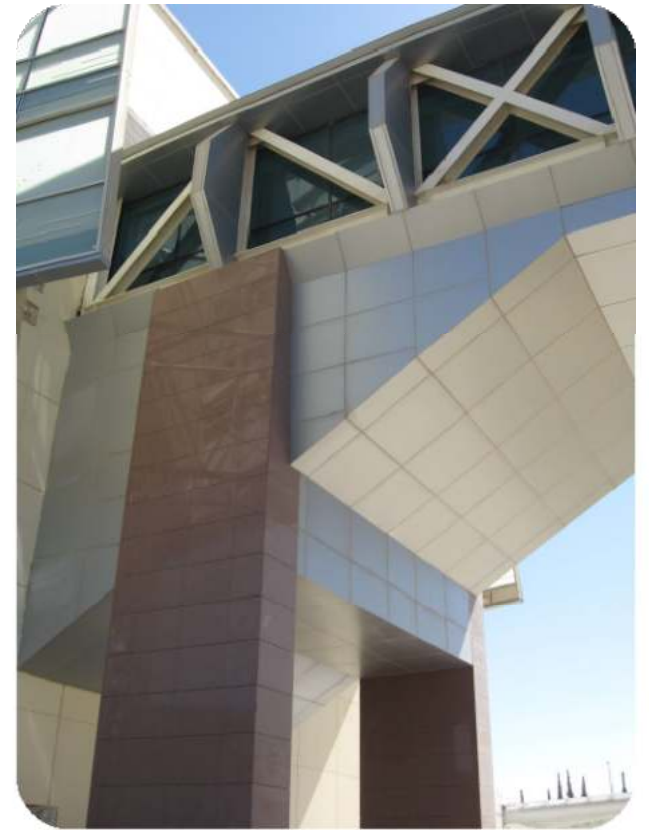
ICPM STEEL PROJECTS LE MERDIAN HOTEL



INVESTMENT COMPANY FOR PRODUCTION & MANUFACTURING



ICPM STEEL PROJECTS LE MERDIAN HOTEL



INVESTMENT COMPANY FOR PRODUCTION & MANUFACTURING



ICPM STEEL PROJECTS
FAIRMONT HOTE



فندق الفيرمونت

INVESTMENT COMPANY FOR PRODUCTION & MANUFACTURING



ICPM STEEL PROJECTS FAIRMONT HOTEL



NEW BALL ROOM – FAIRMONT HOTEL



INVESTMENT COMPANY FOR PRODUCTION & MANUFACTURING



ICPM STEEL PROJECTS
FAIRMONT HOTEL



NEW BALL ROOM –FAIRMONT HOTEL



INVESTMENT COMPANY FOR PRODUCTION & MANUFACTURING



ICPM STEEL PROJECTS
FAIRMONT HOTEL



NEW BALL ROOM –FAIRMONT HOTEL



INVESTMENT COMPANY FOR PRODUCTION & MANUFACTURING



ICPM STEEL PROJECTS
FAIRMONT HOTEL



NEW BALL ROOM –FAIRMONT HOTEL



INVESTMENT COMPANY FOR PRODUCTION & MANUFACTURING



ICPM STEEL PROJECTS
FAIRMONT HOTEL



NEW BALL ROOM –FAIRMONT HOTEL



INVESTMENT COMPANY FOR PRODUCTION & MANUFACTURING



ICPM STEEL PROJECTS
FAIRMONT HOTEL



NEW BALL ROOM –FAIRMONT HOTEL



INVESTMENT COMPANY FOR PRODUCTION & MANUFACTURING

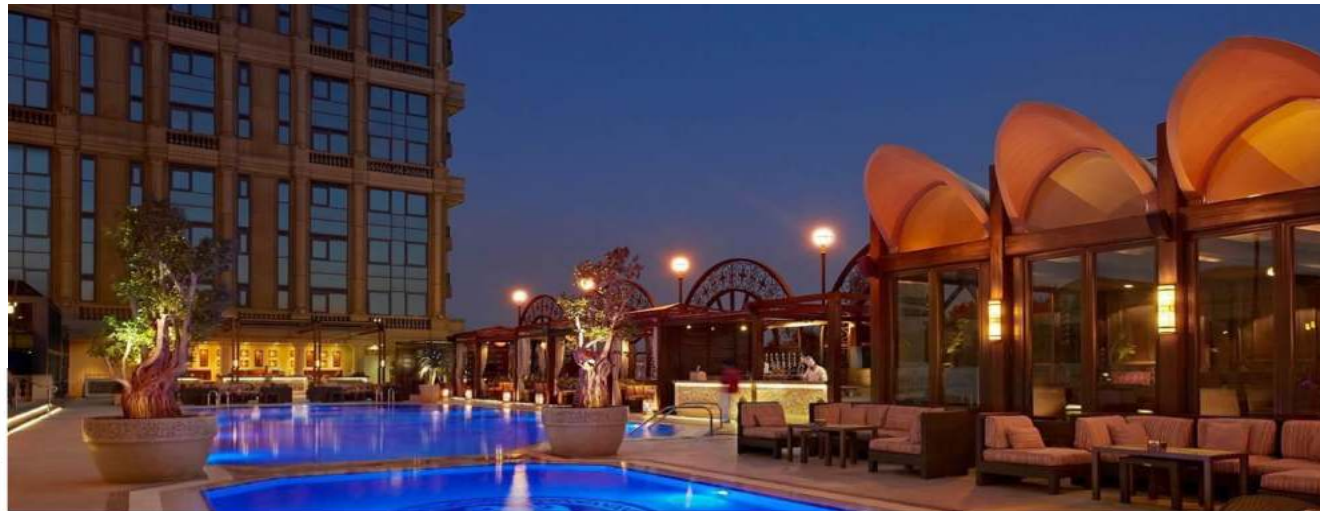


ICPM STEEL PROJECTS FOUR SEASONS HOTEL



FOUR SEASONS HOTEL POOL DECK RESTAURANT

Client	FOUR SEASONS HOTEL
Consultant	CESD & IDSTUDIO
Business Execution date	2 /Oct.2007
Project value	1,200,000 L.E
Project area	8,500 sq. Meter



INVESTMENT COMPANY FOR PRODUCTION & MANUFACTURING



ICPM STEEL PROJECTS FOUR SEASONS HOTEL



INVESTMENT COMPANY FOR PRODUCTION & MANUFACTURING



ICPM STEEL PROJECTS
RESIDENTIAL COMPLEXES



ALMARASEM
DEVELOPMENT



INVESTMENT COMPANY FOR PRODUCTION & MANUFACTURING

ICPM – Ornamental steel Work
Mivida Plot fence - NEW CAIRO



INVESTMENT COMPANY FOR PRODUCTION & MANUFACTURING

ICPM – Ornamental steel Work
Mivida Plot fence - NEW CAIRO

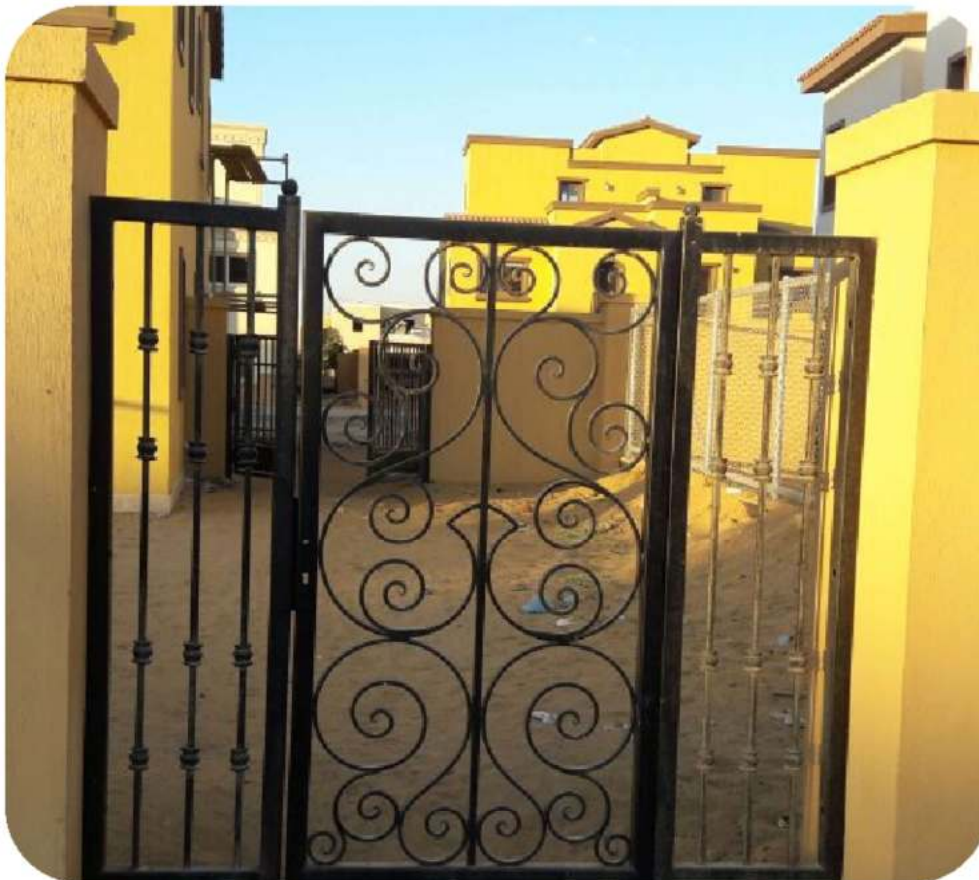


INVESTMENT COMPANY FOR PRODUCTION & MANUFACTURING

ICPM – Ornamental steel Work
Mivida Plot fence - NEW CAIRO



ICPM – Ornamental steel Work
Mivida Plot fence - NEW CAIRO



INVESTMENT COMPANY FOR PRODUCTION & MANUFACTURING

ICPM – Ornamental steel Work
ALLEGRIA RESEDENTIAL



INVESTMENT COMPANY FOR PRODUCTION & MANUFACTURING

ICPM – Ornamental steel Work
ALLEGRIA RESEDENTIAL



ALLEGRIA RESEDENTIAL COMPOUND – SHEIKH ZAYED CITY



INVESTMENT COMPANY FOR PRODUCTION & MANUFACTURING

ICPM – Ornamental steel Work
ALLEGRIA RESEDENTIAL

ALLEGRIA OUTER STEEL FENCE– SHEIKH ZAYED CITY



INVESTMENT COMPANY FOR PRODUCTION & MANUFACTURING

ICPM – Ornamental steel Work
ALLEGRIA RESEDENTIAL

ALLEGRIA OUTER STEEL FENCE– SHEIKH ZAYED CITY



INVESTMENT COMPANY FOR PRODUCTION & MANUFACTURING

ICPM – Ornamental steel Work
ALLEGRIA RESEDENTIAL

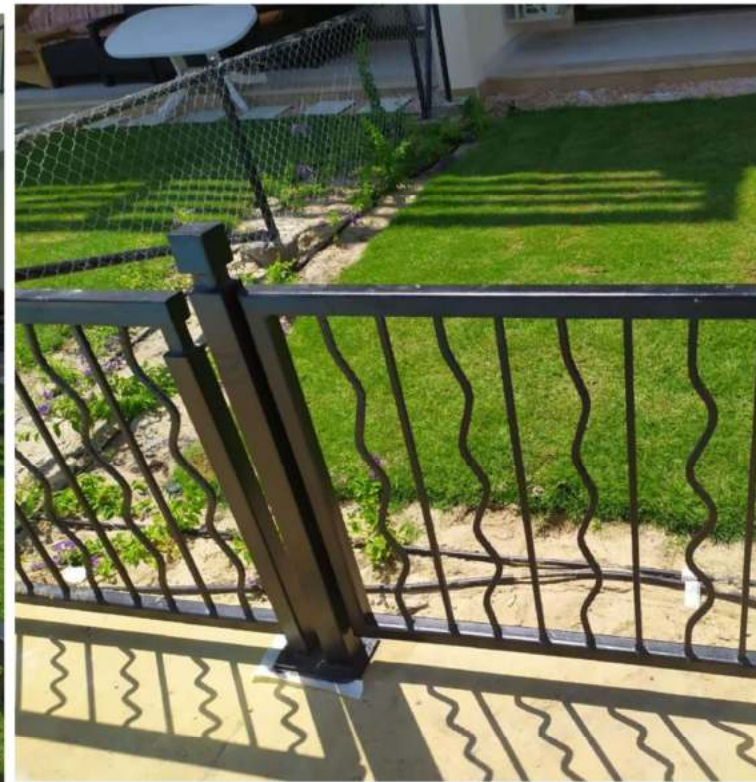
ALLEGRIA OUTER STEEL FENCE– SHEIKH ZAYED CITY



INVESTMENT COMPANY FOR PRODUCTION & MANUFACTURING

ICPM – Ornamental steel Work
MARASSI BLANCA

MARASSI BLANCA -NORTH COAST



INVESTMENT COMPANY FOR PRODUCTION & MANUFACTURING



ICPM STEEL PROJECTS
SPECIAL PROJECTS



INVESTMENT COMPANY FOR PRODUCTION & MANUFACTURING



ICPM STEEL PROJECTS
SPECIAL PROJECTS



ALMARASEM
DEVELOPMENT

مدينة البعوث القديمة

INVESTMENT COMPANY FOR PRODUCTION & MANUFACTURING



ICPM STEEL PROJECTS SPECIAL PROJECTS



INVESTMENT COMPANY FOR PRODUCTION & MANUFACTURING



ICPM STEEL PROJECTS SPECIAL PROJECTS



ALMARASEM
DEVELOPMENT



INVESTMENT COMPANY FOR PRODUCTION & MANUFACTURING



ICPM STEEL PROJECTS SPECIAL PROJECTS



ALMARASEM
DEVELOPMENT



INVESTMENT COMPANY FOR PRODUCTION & MANUFACTURING



ICPM STEEL PROJECTS SPECIAL PROJECTS



ALMARASEM
DEVELOPMENT



INVESTMENT COMPANY FOR PRODUCTION & MANUFACTURING



ICPM STEEL PROJECTS SPECIAL PROJECTS



INVESTMENT COMPANY FOR PRODUCTION & MANUFACTURING

ICPM STEEL PROJECTS
SPECIAL PROJECTS



INVESTMENT COMPANY FOR PRODUCTION & MANUFACTURING

ICPM STEEL PROJECTS
SPECIAL PROJECTS



INVESTMENT COMPANY FOR PRODUCTION & MANUFACTURING

ICPM STEEL PROJECTS
SPECIAL PROJECTS



INVESTMENT COMPANY FOR PRODUCTION & MANUFACTURING



ICPM STEEL PROJECTS SPECIAL PROJECTS



INVESTMENT COMPANY FOR PRODUCTION & MANUFACTURING



ICPM STEEL PROJECTS
SPECIAL PROJECTS



قناة الأزهر الفضائية

INVESTMENT COMPANY FOR PRODUCTION & MANUFACTURING



ICPM –Steel Structure System ALAZHR STUDIOS



ALAZHR STUDIOS	
Client	AL-AZHAR
Consultant	DIYAR
Business Execution date	3 /MAY.2017
Project value	1,668,861
Project area	182 sq. Meter



INVESTMENT COMPANY FOR PRODUCTION & MANUFACTURING



ICPM STEEL PROJECTS SPECIAL PROJECTS



INVESTMENT COMPANY FOR PRODUCTION & MANUFACTURING



ICPM –Steel Structure System
ALAZHR STUDIOS



ALMARASEM
DEVELOPMENT



INVESTMENT COMPANY FOR PRODUCTION & MANUFACTURING

ICPM – Ornamental steel Work
Pharmacy & dentistry University



INVESTMENT COMPANY FOR PRODUCTION & MANUFACTURING



ICPM STEEL PROJECTS
SPECIAL PROJECTS



ALMARASEM
DEVELOPMENT



النهر الأخضر بالعاصمة الإدارية

INVESTMENT COMPANY FOR PRODUCTION & MANUFACTURING



ICPM –Steel Structure System

Central Park of the new administrative capital

Central Park	
Client	ministry of housing utilities and urban communities
Consultant	DAR
Business Execution date	02/DEC.2019



ALMARASEM

Steel Structure System



INVESTMENT COMPANY FOR PRODUCTION & MANUFACTURING



ICPM –Steel Structure System
Central Park of the new administrative capital



ALMARASEM
Steel Structure System



INVESTMENT COMPANY FOR PRODUCTION & MANUFACTURING



ICPM – Steel Structure System
Central Park of the new administrative capital



ALMARASEM
Steel Structure System



INVESTMENT COMPANY FOR PRODUCTION & MANUFACTURING



ICPM – Steel Structure System
Central Park of the new administrative capital



ALMARASEM
Steel Structure System



INVESTMENT COMPANY FOR PRODUCTION & MANUFACTURING



ICPM –Steel Structure System
Central Park of the new administrative capital



ALMARASEM
Steel Structure System



INVESTMENT COMPANY FOR PRODUCTION & MANUFACTURING



ICPM –Steel Structure System
Central Park of the new administrative capital



ALMARASEEM
Steel Structure System



INVESTMENT COMPANY FOR PRODUCTION & MANUFACTURING



ICPM –Steel Structure System
Central Park of the new administrative capital



INVESTMENT COMPANY FOR PRODUCTION & MANUFACTURING



ALMARASEM
Steel Structure System





ICPM –Steel Structure System
Central Park of the new administrative capital



ALMARASEEM
Steel Structure System



INVESTMENT COMPANY FOR PRODUCTION & MANUFACTURING



ICPM –Steel Structure System
Central Park of the new administrative capital



ALMARASEEM
Steel Structure System



INVESTMENT COMPANY FOR PRODUCTION & MANUFACTURING



ICPM –Steel Structure System

Central Park of the new administrative capital



ALMARASEM

Steel Structure System

INVESTMENT COMPANY FOR PRODUCTION & MANUFACTURING



ICPM –Steel Structure System
Central Park of the new administrative capital



ALMARASEEM
Steel Structure System



INVESTMENT COMPANY FOR PRODUCTION & MANUFACTURING



ICPM –Steel Structure System

Central Park of the new administrative capital



ALMARASEEM

Steel Structure System

INVESTMENT COMPANY FOR PRODUCTION & MANUFACTURING



ICPM –Steel Structure System

Central Park of the new administrative capital



ALMARASEH

Steel Structure System

INVESTMENT COMPANY FOR PRODUCTION & MANUFACTURING



ICPM – Steel Structure System
Central Park of the new administrative capital



ALMARASEEM
Steel Structure System



INVESTMENT COMPANY FOR PRODUCTION & MANUFACTURING



ICPM –Steel Structure System
Central Park of the new administrative capital



ALMARASEM
Steel Structure System



INVESTMENT COMPANY FOR PRODUCTION & MANUFACTURING



ICPM –Steel Structure System
Central Park of the new administrative capital



ALMARASEEM
Steel Structure System



INVESTMENT COMPANY FOR PRODUCTION & MANUFACTURING



ICPM –Steel Structure System
Central Park of the new administrative capital



ALMARASEM
Steel Structure System



INVESTMENT COMPANY FOR PRODUCTION & MANUFACTURING



ICPM –Steel Structure System
Central Park of the new administrative capital



ALMARASEM
Steel Structure System



INVESTMENT COMPANY FOR PRODUCTION & MANUFACTURING



ICPM –Steel Structure System
Central Park of the new administrative capital



ALMARASEM
Steel Structure System



INVESTMENT COMPANY FOR PRODUCTION & MANUFACTURING



ICPM – Steel Structure System
Central Park of the new administrative capital



ALMARASEEM
Steel Structure System



INVESTMENT COMPANY FOR PRODUCTION & MANUFACTURING



ICPM –Steel Structure System
Central Park of the new administrative capital



ALMARASEM

Steel Structure System



INVESTMENT COMPANY FOR PRODUCTION & MANUFACTURING



ICPM –Steel Structure System
Central Park of the new administrative capital



ALMARASEM
Steel Structure System



INVESTMENT COMPANY FOR PRODUCTION & MANUFACTURING



ICPM –Steel Structure System Central Park of the new administrative capital



INVESTMENT COMPANY FOR PRODUCTION & MANUFACTURING



ALMARASEEM

Steel Structure System





ICPM –Steel Structure System
Central Park of the new administrative capital



ALMARASEEM
Steel Structure System



INVESTMENT COMPANY FOR PRODUCTION & MANUFACTURING



ICPM –Steel Structure System
Central Park of the new administrative capital



ALMARASEM

Steel Structure System



INVESTMENT COMPANY FOR PRODUCTION & MANUFACTURING



ICPM – Steel Structure System
R05 the new administrative capital



ALMARASEM



INVESTMENT COMPANY FOR PRODUCTION & MANUFACTURING



ICPM –Steel Structure System
R05 the new administrative capital



ALMARASEM



INVESTMENT COMPANY FOR PRODUCTION & MANUFACTURING



ICPM –Steel Structure System
R05 the new administrative capital



ALMARASEEM



INVESTMENT COMPANY FOR PRODUCTION & MANUFACTURING



ICPM –Steel Structure System
R05 the new administrative capital



ALMARASEM



INVESTMENT COMPANY FOR PRODUCTION & MANUFACTURING



ICPM –Steel Structure System
R05 the new administrative capital



ALMARASEEM



INVESTMENT COMPANY FOR PRODUCTION & MANUFACTURING



ICPM –Steel Structure System
R05 the new administrative capital



ALMARASEM



INVESTMENT COMPANY FOR PRODUCTION & MANUFACTURING



ICPM –Steel Structure System HORSE ARINA



Steel Structure System

HORSE ARINA	
Client	Rabab Farm
Consultant	COSMOS-E
Business Execution date	15/JUL.2018
Project value	9,300,000 L.E
Project area	5500 sq. Meter



INVESTMENT COMPANY FOR PRODUCTION & MANUFACTURING



ICPM –Steel Structure System HORSE ARINA



INVESTMENT COMPANY FOR PRODUCTION & MANUFACTURING



ICPM –Steel Structure System The Board of Trustees Building



The Board of Trustees Building	
Client	The Board of Trustees
Consultant	New Cairo's Government Office
Business Execution date	4 /APR.2019
Project value	1,668,861
Project area	182 sq. Meter



INVESTMENT COMPANY FOR PRODUCTION & MANUFACTURING



ICPM –Steel Structure System
The Board of Trustees Building



ALMARASEM
DEVELOPMENT



INVESTMENT COMPANY FOR PRODUCTION & MANUFACTURING

ICPM – Ornamental steel Work
AI –BURUJ PROJECT



INVESTMENT COMPANY FOR PRODUCTION & MANUFACTURING

ICPM – Ornamental steel Work
AI –BURUJ PROJECT



INVESTMENT COMPANY FOR PRODUCTION & MANUFACTURING

ICPM – Ornamental steel Work
AI –BURUJ PROJECT



INVESTMENT COMPANY FOR PRODUCTION & MANUFACTURING

ICPM – Ornamental steel Work
AI –BURUJ PROJECT



INVESTMENT COMPANY FOR PRODUCTION & MANUFACTURING

ICPM – Service steel Doors
UPTOWN CAIRO RESIDENTIAL BUILDINGS

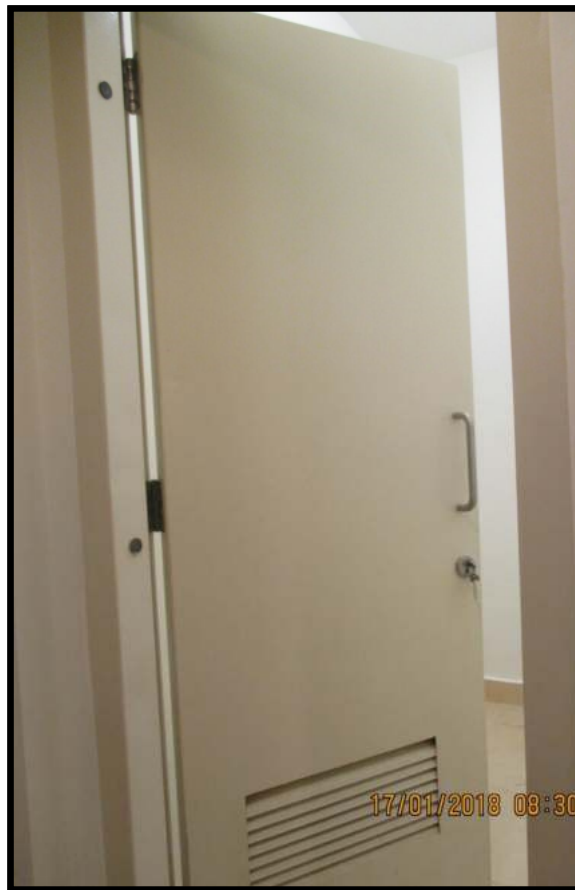


ICPM – Service steel Doors
UPTOWN CAIRO RESIDENTIAL BUILDINGS



INVESTMENT COMPANY FOR PRODUCTION & MANUFACTURING

ICPM – Service steel Doors
UPTOWN CAIRO RESIDENTIAL BUILDINGS



ICPM – Service steel Doors
ALEX-Blanca Hub Building



INVESTMENT COMPANY FOR PRODUCTION & MANUFACTURING

ICPM –Steel Factory
Experience Record



CAIRO INTERNATIONAL AIRPORT



SHARM EL SHEIKH AIRPORT



ALLERGRIA



FOUR SEASONS HOTEL



AL AZHAR



AEROTEL

INVESTMENT COMPANY FOR PRODUCTION & MANUFACTURING

ICPM – Steel Factory Experience Record



RABAB HORSE ARINA



RABAB HORSE ARINA



UPTOWN CAIRP STEEL DOORS



FUCULTY OF PHARMASY - ALAZHAR



PALM HILLS



ALAZHR STUDIOS

INVESTMENT COMPANY FOR PRODUCTION & MANUFACTURING

WOODEN FACTORY



WOODEN FACTORY



ICPM STEEL FACTORY



FIRE & NON FIRE RATED DOORS SECTION



WOODEN CLADDING SECTION



WOODEN FURNITURE SECTION



INVESTMENT COMPANY FOR PRODUCTION & MANUFACTURING

ICPM WOODEN WORKS

Production of woodworks characterized with its various modern and special designs, using natural wood such as Oak, Mahogany and the like or by using artificial wood as Medium Density Fibers (MDF) and High Density Fibers (HDF).



ICPM WOODEN WORKS

Three integrated production lines, consisting of a full range of piston machines for assembly horizontal and champan machines, abrasive wheels, crust cut and sew, as well as other advanced technology machinery such as the router machine that is fully automated to form and drill all designs on all wood products.

Our capability is **4500 m3/year** plant which encompasses 6000 square meters of indoor and outdoor working and storage space as well as **12,000 square meters**.



DOORS SECTION

FIRE & NON FIRE RATED DOORS SECTION



DOORS SECTION

FIRE RATED DOORS CERTIFICATES



intertek
Total Quality Assured



This is a certificate of compliance to certify that the holder has successfully completed the requirements of the above scheme which include the testing of products, the initial assessment, and are subject to continuing annual assessments of their compliance and testing of samples of products taken from production (as applicable to the scheme) and has been registered within the scheme for the products detailed.

Certificate of Compliance

You have been awarded:
WH Service Mark 2014 for Category D - Door/frame Assemblies, Doors
Standard: BS 476 Part 22 (1987)
Certificate number: WH119-33140411

Organization: Investment Company for Production & Manufacturing (ICPM)
Plot 1, 2, 3 & 4, Industrial Zone
El Rowbiky Road, Badr City
Cairo
Egypt

Product: Halspan 60 Optima Fire Rated Wood Door Assembly
Spec ID: 33278
Listing information: See following page(s)

Certification body: Intertek Testing Services NA, Inc.
Initial registration: March 25, 2019
Date of expiry: December 31, 2022
Issue status: 4

Authorized By:

Jean-Philippe Kays, Director of Certification

Intertek Testing Services NA, Inc.
14111 Alving in Road, Ste 11, Jackson Heights, NY 11368, USA
Phone: 547-439-5887 Fax: 547-439-7323

www.intertek.com

intertek
Total Quality Assured



This is a certificate of compliance to certify that the holder has successfully completed the requirements of the above scheme which include the testing of products, the initial assessment, and are subject to continuing annual assessments of their compliance and testing of samples of products taken from production (as applicable to the scheme) and has been registered within the scheme for the products detailed.

Certificate of Compliance

You have been awarded:
WH Service Mark 2014 for Category D - Door/frame Assemblies, Doors
Standard: BS 476 Part 22 (1987)
Certificate number: WH119-33140407

Organization: Investment Company for Production & Manufacturing (ICPM)
Plot 1, 2, 3 & 4, Industrial Zone
El Rowbiky Road, Badr City
Cairo
Egypt

Product: Halspan 30 Prima and Halspan 30 Prima Plus Fire Rated Door Assembly
Spec ID: 33154
Listing information: See following page(s)

Certification body: Intertek Testing Services NA, Inc.
Initial registration: March 25, 2019
Date of expiry: December 31, 2022
Issue status: 4

Authorized By:

Jean-Philippe Kays, Director of Certification

Intertek Testing Services NA, Inc.
14111 Alving in Road, Ste 11, Jackson Heights, NY 11368, USA
Phone: 547-439-5887 Fax: 547-439-7323

www.intertek.com

intertek
Total Quality Assured



This is a certificate of compliance to certify that the holder has successfully completed the requirements of the above scheme which include the testing of products, the initial assessment, and are subject to continuing annual assessments of their compliance and testing of samples of products taken from production (as applicable to the scheme) and has been registered within the scheme for the products detailed.

Certificate of Compliance

You have been awarded:
WH Service Mark 2014 for Category D - Door/frame Assemblies, Doors
Standard: BS 476 Part 22 (1987)
Certificate number: WH119-33140409

Organization: Investment Company for Production & Manufacturing (ICPM)
Plot 1, 2, 3 & 4, Industrial Zone
El Rowbiky Road, Badr City
Cairo
Egypt

Product: Halspan 90 Fire Rated Wood Door Assembly
Spec ID: 33075
Listing information: See following page(s)

Certification body: Intertek Testing Services NA, Inc.
Initial registration: March 25, 2019
Date of expiry: December 31, 2022
Issue status: 4

Authorized By:

Jean-Philippe Kays, Director of Certification

Intertek Testing Services NA, Inc.
14111 Alving in Road, Ste 11, Jackson Heights, NY 11368, USA
Phone: 547-439-5887 Fax: 547-439-7323

www.intertek.com

DOORS SECTION

FIRE RATED DOORS CERTIFICATES



This is a certificate of compliance to certify that the holder has successfully completed the requirements of the above scheme which include the testing of products, the initial assessment, and are subject to continuing annual assessments of their compliance and testing of samples of products taken from production (as applicable to the scheme) and has been registered within the scheme for the products notified.

Certificate of Compliance

You have been awarded:
**WH Service Mark 2014 for Category D -
Door/frame Assemblies, Doors**
Standards: BS 476 Part 22 (1987)

Certificate number: WHI19-33140410

Organization: Investment Company for Production & Manufacturing (ICPM)
Plot 1, 2, 3 & 4, Industrial Zone
El Rowbiky Road, Badr City
Cairo
Egypt

Product: Halspan 30 Optima Fire Rated Door Assembly
Spec ID: 32970
Listing Information: See following page(s)

Certification body: Intertek Testing Services NA, Inc.
Initial registration: March 25, 2019
Date of expiry: December 31, 2022
Issue status: 4

Authorized By:
Jean-Philippe Kuyt, Director of Certification
Intertek Testing Services Inc., Inc.
245 F. Algonquin Road, Ste 11, Arlington Heights, IL 60005 USA
Phone: 847-439-5667 Fax: 847-439-7320

www.infinitelife.com

[illegible]

Investment Company for Production & Manufacturing (ICPM) | 32870 | Rev: Jan 10 2022 5:54AM | Uncontrolled Copy Page 1 of 1



This is a certificate of compliance to certify that the bearer has successfully strengthened the requirements of the above scheme which include the testing of products, the initial assessment, and are subject to continuing annual assessments of their compliance and testing of samples of products taken from production (as applicable to the scheme) and has been registered within the scheme for the products detailed.

Certificate of Compliance

You have been awarded:
**WH Service Mark 2014 for Category D -
Door/frame Assemblies, Doors**
Standards: BS 476 Part 22 (1967)

Certificate number: WHI19-33140425

Organization: Investment Company for Production & Manufacturing (ICPM)
Plot 1, 2, 3 & 4, Industrial Zone
El Rowbiky Road, Badr City
Cairo
Egypt

Product: Halspan 60 Minute Fire Rated Prima Plus Enhanced Door and Frame Assembly
Spec ID: 36163
Loading Information: See following page(s)

Certification body: Intertek Testing Services NA, Inc.
Initial registration: March 25, 2019
Date of expiry: December 31, 2022
Issue status: 4

Authorized By:
Jean-Philippe Kaysi, Director of Certification

Intertek Testing Services NA, Inc.
547 E. Algonquin Road, Ste. II, Arlington Heights, IL 60005-1254
Phone: 847-439-5887 Fax: 847-439-7320

www.intertek.com

[illegible]

Investment Company for Production & Manufacturing (ICPM) | 38183 | Rev: Jan 10 2022 4:23AM | Uncontrolled Copy Page 1 of 4



This is a certificate of compliance to certify that the owner has successfully completed the requirements of the above scheme which include the testing of products, the initial assessment, and are subject to continuing annual assessments of their compliance and testing of samples of products taken from production (as applicable to the scheme) and has been registered within the scheme for the products detailed.

Certificate of Compliance

You have been awarded:
**WH Service Mark 2014 for Category D -
Door/frame Assemblies, Doors**
Standards: BS 476 Part 22 (1987)

Certificate number: WHI19-33140438

Organization: Investment Company for Production & Manufacturing (ICPM)
Plot 1, 2, 3 & 4, Industrial Zone
El Rowbiky Road, Badr City
Cairo
Egypt

Product: Halspan 90 Prima Plus
Spec ID: 42524
Listing Information: See following page(s)

Certification body: Intertek Testing Services NA, Inc.
Initial registration: March 25, 2019
Date of expiry: December 31, 2022
Issue status: 4

Authorized By:
Jean-Philippe Kays, Director of Certification

Montech Testing Services Inc., Inc.
545 F. Algerien Road, Ste 11, Adaptsville, VA 17007-1204
Phone: 347-439-5997 Fax: 347-439-7320

www.intertek.com

This certificate and schedule are issued to you by your annual accreditation body by means of Tredwell & Co., Inc. and the reader or user should consult internet or schedule in hand. The certificate represents the property of International Testing Services, Inc. and may not be retransmitted to others without its consent. This certificate is for the exclusive use of the client and is a property of the client. The client agrees to indemnify and hold harmless International Testing Services, Inc. and its subsidiaries and affiliates from and against all claims, damages, losses, and expenses, including reasonable attorneys' fees, arising out of or from the use of this certificate or schedule in any way, whether or not such claims, damages, losses, and expenses are caused in whole or in part by the negligence of International Testing Services, Inc. or its subsidiaries and affiliates. Use of this certificate and schedule is subject to the conditions set forth in the agreement. Any further use of the information for the sale or disposition of the tested material, product or service must be approved in writing by International Testing Services and follow any conditions as for the purpose of securing appropriate usage of the certificate or schedule in accordance with the agreement. This will not be the sole basis of the client's obligation to the client of the client's obligations to the client.

Investment Company for Production & Manufacturing (ICPM) | 42924 | Rev: Jan 10 2022 1:11AM | Uncontrolled Copy Page 1 of 2

DOORS SECTION

DOORS PROJECT SAMPLES



DOORS SECTION

DOORS PROJECT SAMPLES



DOORS SECTION

DOORS PROJECT SAMPLES



DOORS SECTION

DOORS PROJECT SAMPLES



DOORS SECTION



DOORS PROJECT SAMPLES



DOORS SECTION

DOORS PROJECT SAMPLES



DOORS SECTION

DOORS PROJECT SAMPLES



DOORS SECTION

DOORS PROJECT SAMPLES


ALMARASEM
DEVELOPMENT



DOORS SECTION

DOORS PROJECT SAMPLES



DOORS SECTION

DOORS PROJECT SAMPLES



DOORS SECTION

DOORS PROJECT SAMPLES



DOORS SECTION

DOORS PROJECT SAMPLES



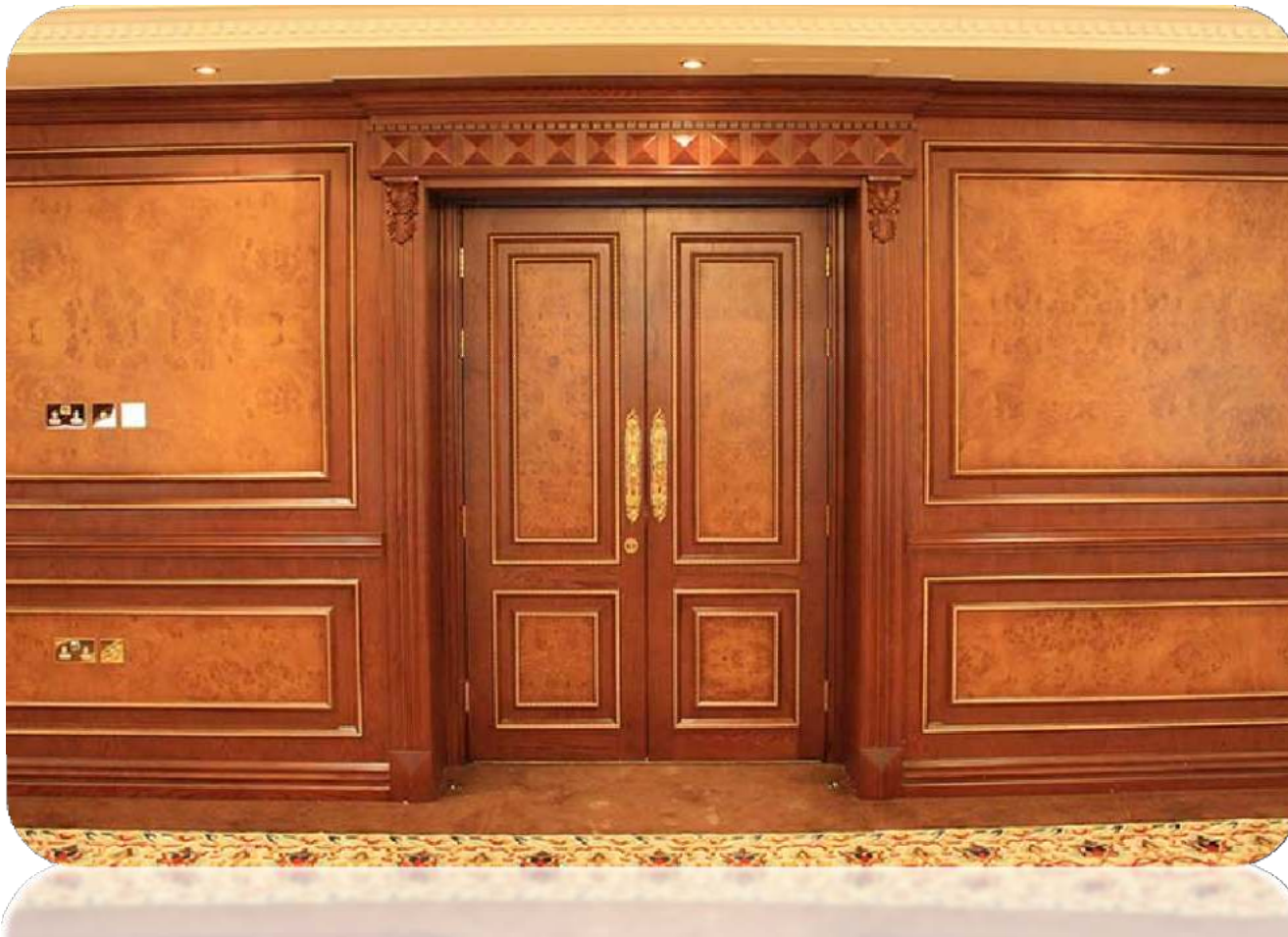
DOORS SECTION

DOORS PROJECT SAMPLES



DOORS SECTION

DOORS PROJECT SAMPLES



DOORS SECTION

DOORS PROJECT SAMPLES



DOORS SECTION

DOORS PROJECT SAMPLES



DOORS SECTION

DOORS PROJECT SAMPLES



DOORS SECTION

DOORS PROJECT SAMPLES



DOORS SECTION

DOORS PROJECT SAMPLES



DOORS SECTION

DOORS PROJECT SAMPLES



DOORS SECTION

DOORS PROJECT SAMPLES



DOORS SECTION



DOORS PROJECT SAMPLES



DOORS SECTION

DOORS PROJECT SAMPLES



DOORS SECTION



INVESTMENT COMPANY FOR PRODUCTION & MANUFACTURING

DOORS SECTION



ALMARASEM
DEVELOPMENT



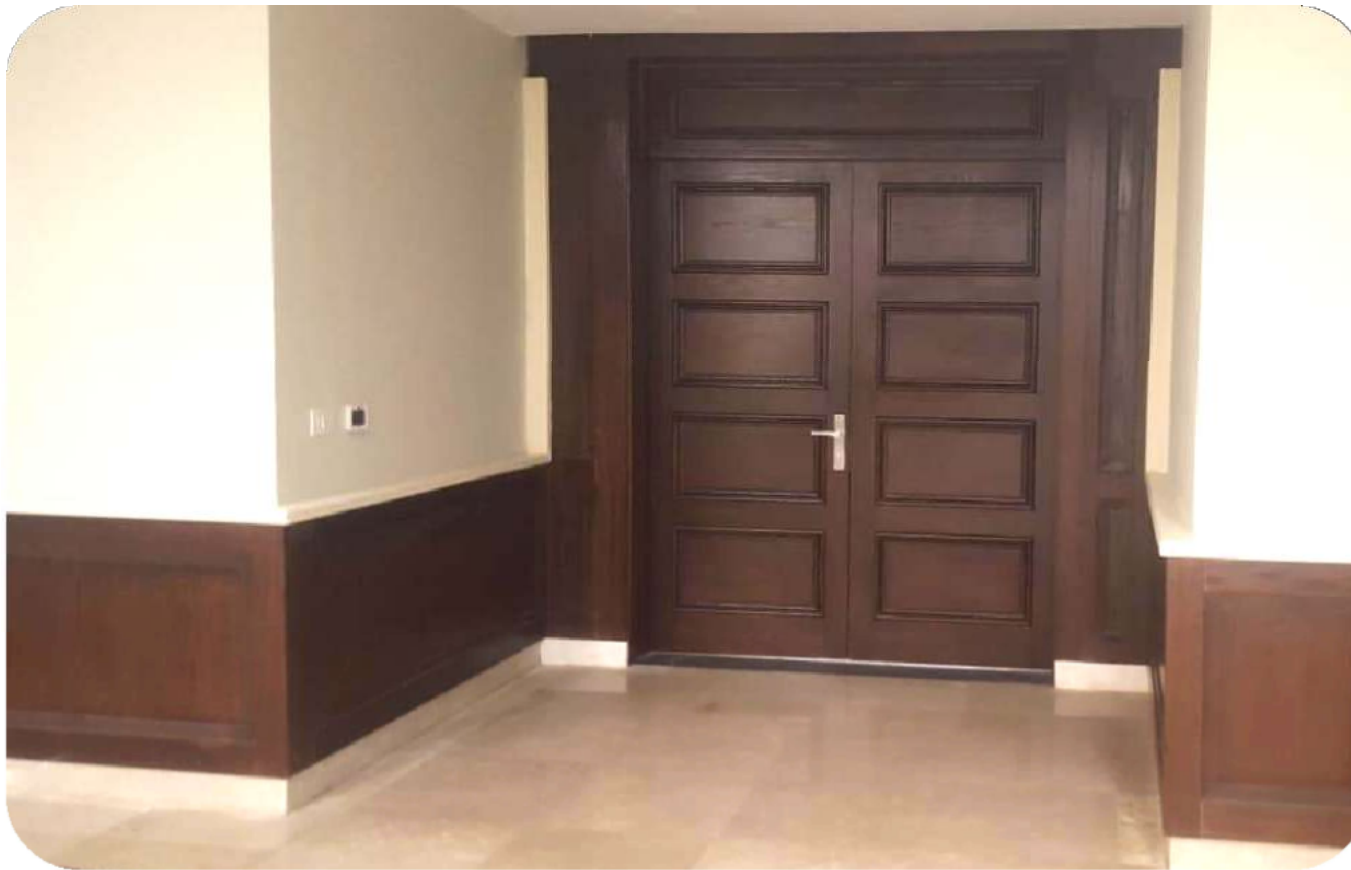
INVESTMENT COMPANY FOR PRODUCTION & MANUFACTURING

DOORS SECTION



INVESTMENT COMPANY FOR PRODUCTION & MANUFACTURING

DOORS SECTION



INVESTMENT COMPANY FOR PRODUCTION & MANUFACTURING

DOORS SECTION



INVESTMENT COMPANY FOR PRODUCTION & MANUFACTURING

DOORS SECTION



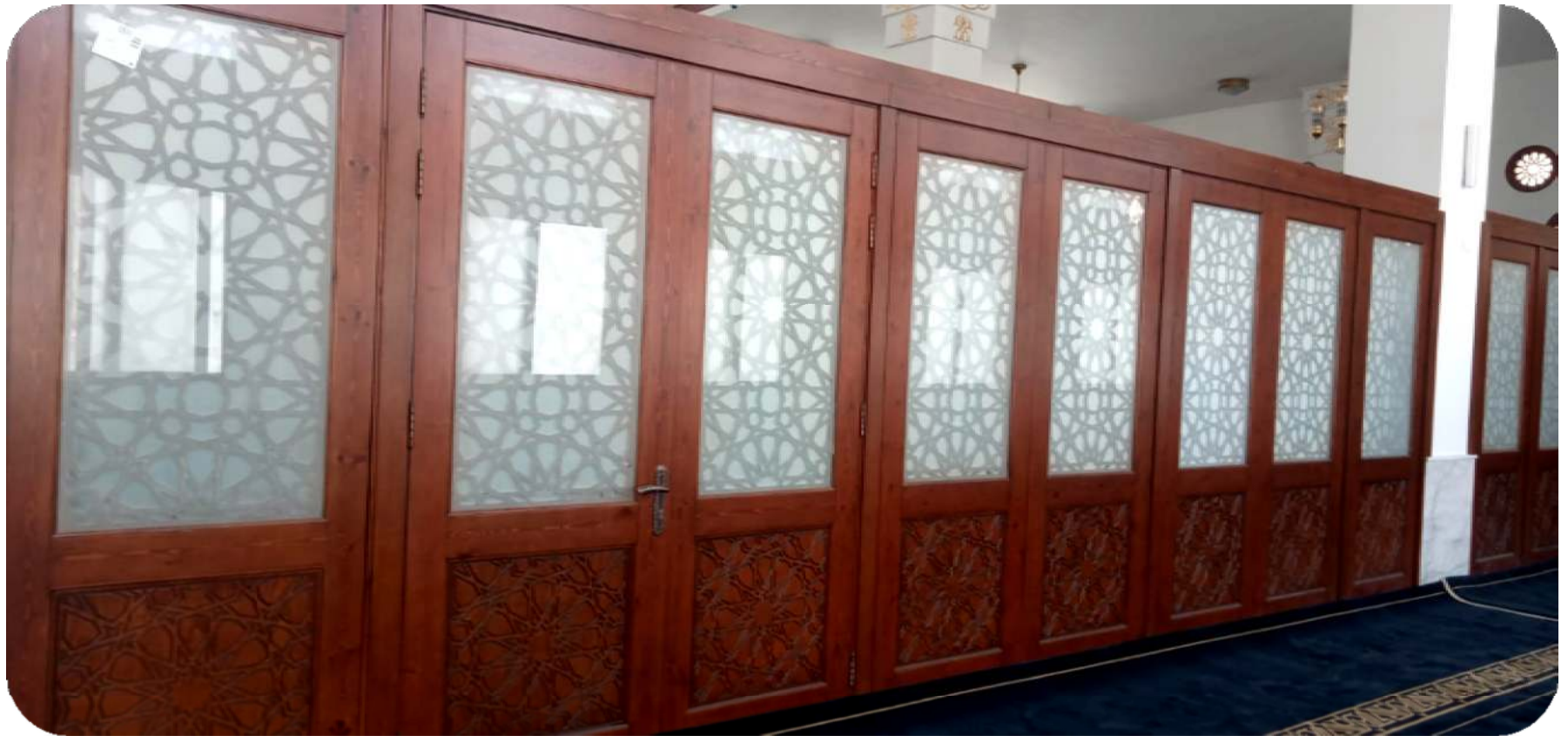
INVESTMENT COMPANY FOR PRODUCTION & MANUFACTURING

Wood Works- Experience Record
Bernice Convention Hall



INVESTMENT COMPANY FOR PRODUCTION & MANUFACTURING

DOORS SECTION



INVESTMENT COMPANY FOR PRODUCTION & MANUFACTURING

DOORS SECTION



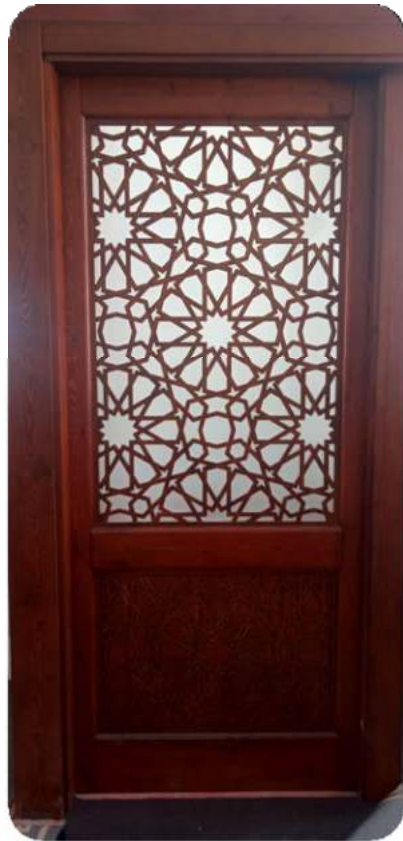
INVESTMENT COMPANY FOR PRODUCTION & MANUFACTURING

DOORS SECTION



INVESTMENT COMPANY FOR PRODUCTION & MANUFACTURING

DOORS SECTION



INVESTMENT COMPANY FOR PRODUCTION & MANUFACTURING

DOORS SECTION



INVESTMENT COMPANY FOR PRODUCTION & MANUFACTURING



ICPM WOODEN PROJECTS



ICPM WOODEN WORKS Experience Record



CAIRO INTERNATIONAL AIRPORT



SHARM EL SHEIKH AIRPORT



ALLERGRIA



EMAAR SALES CENTRE UPTOWN CAIRO



HURGHADA AIRPORT



AEROTEL

INVESTMENT COMPANY FOR PRODUCTION & MANUFACTURING

Wood Works- Experience Record

NEW TERMINAL BUILDING HURGHADA AIRPORT



INVESTMENT COMPANY FOR PRODUCTION & MANUFACTURING

Wood Works- Experience Record

NEW TERMINAL BUILDING HURGHADA AIRPORT



INVESTMENT COMPANY FOR PRODUCTION & MANUFACTURING

Wood Works- Experience Record

NEW TERMINAL BUILDING HURGHADA AIRPORT



INVESTMENT COMPANY FOR PRODUCTION & MANUFACTURING

Wood Works- Experience Record

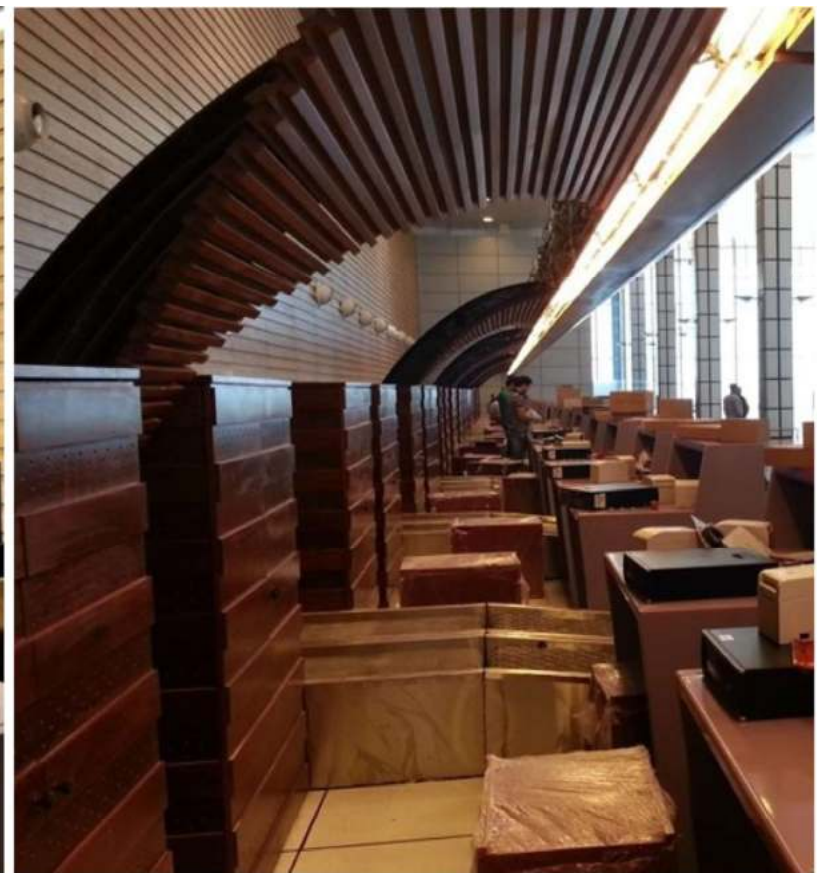
NEW TERMINAL BUILDING HURGHADA AIRPORT



INVESTMENT COMPANY FOR PRODUCTION & MANUFACTURING

Wood Works- Experience Record

NEW TERMINAL BUILDING HURGHADA AIRPORT



INVESTMENT COMPANY FOR PRODUCTION & MANUFACTURING

Wood Works- Experience Record

NEW TERMINAL BUILDING HURGHADA AIRPORT



INVESTMENT COMPANY FOR PRODUCTION & MANUFACTURING

Wood Works- Experience Record

NEW TERMINAL BUILDING HURGHADA AIRPORT



INVESTMENT COMPANY FOR PRODUCTION & MANUFACTURING

Wood Works- Experience Record
Bernice Convention Hall



INVESTMENT COMPANY FOR PRODUCTION & MANUFACTURING

Wood Works– Experience Record
Bernice Convention Hall



INVESTMENT COMPANY FOR PRODUCTION & MANUFACTURING

Wood Works– Experience Record
Bernice Convention Hall



INVESTMENT COMPANY FOR PRODUCTION & MANUFACTURING

Wood Works– Experience Record
Bernice Convention Hall



INVESTMENT COMPANY FOR PRODUCTION & MANUFACTURING

Wood Works- Experience Record
Bernice Convention Hall



INVESTMENT COMPANY FOR PRODUCTION & MANUFACTURING

Wood Works– Experience Record
Bernice Convention Hall



INVESTMENT COMPANY FOR PRODUCTION & MANUFACTURING

Wood Works– Experience Record
Bernice Convention Hall



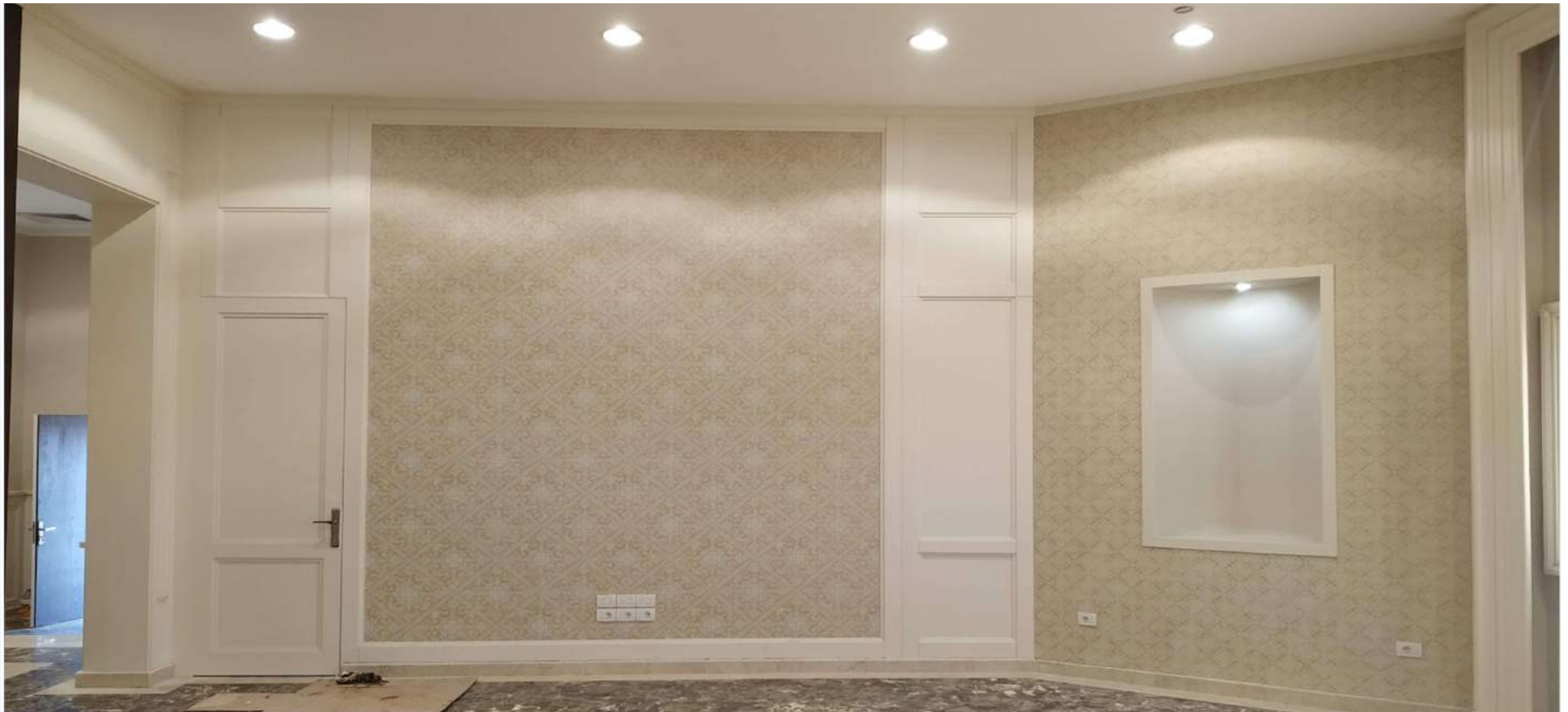
INVESTMENT COMPANY FOR PRODUCTION & MANUFACTURING

Wood Works– Experience Record
Bernice Convention Hall



INVESTMENT COMPANY FOR PRODUCTION & MANUFACTURING

Wood Works- Experience Record
Bernice Convention Hall



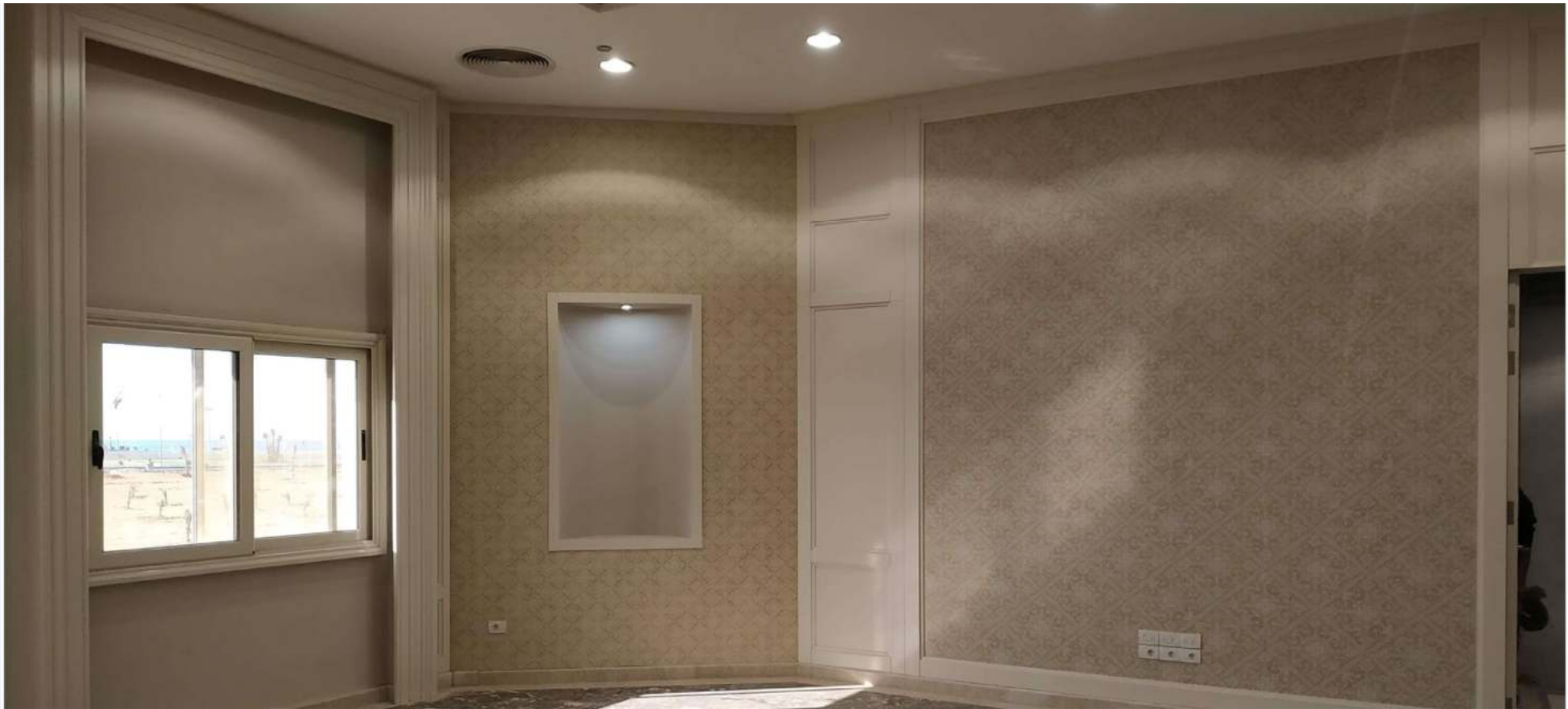
INVESTMENT COMPANY FOR PRODUCTION & MANUFACTURING

Wood Works– Experience Record
Bernice Convention Hall



INVESTMENT COMPANY FOR PRODUCTION & MANUFACTURING

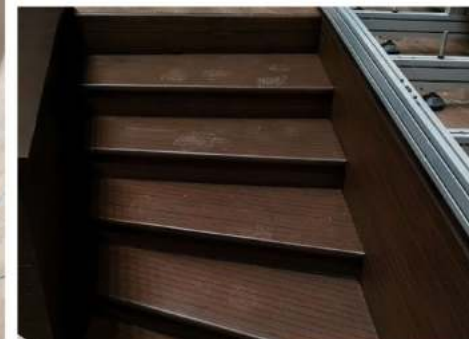
Wood Works- Experience Record
Bernice Convention Hall



INVESTMENT COMPANY FOR PRODUCTION & MANUFACTURING

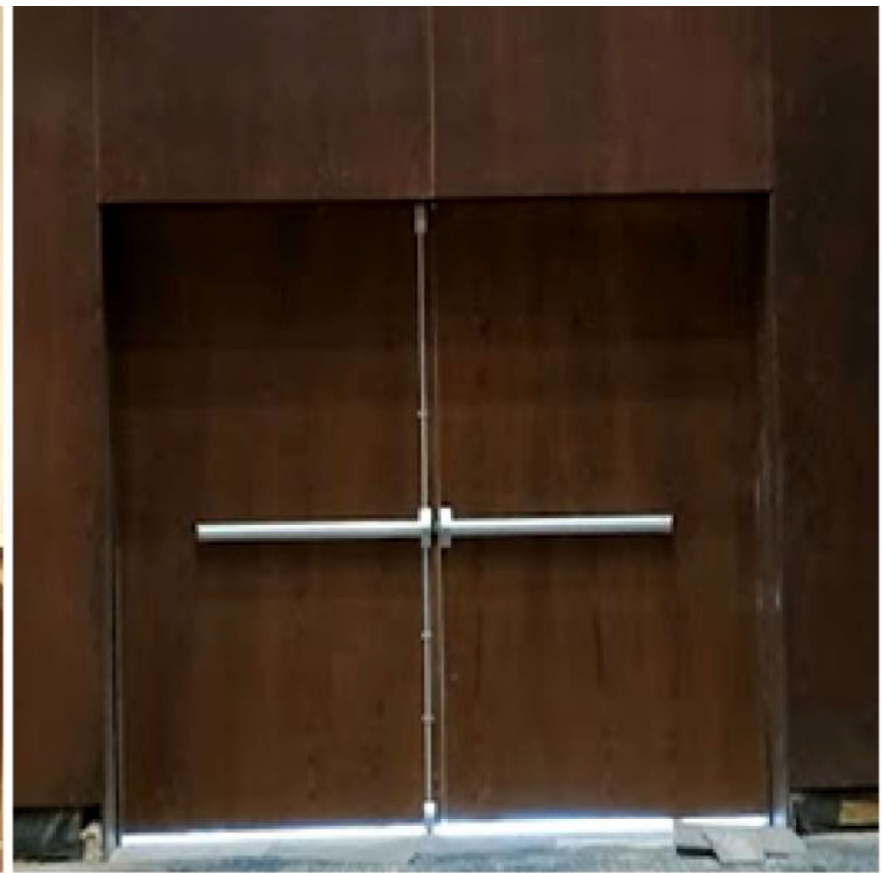
Wood Works– Experience Record

Bernice Convention Hall



INVESTMENT COMPANY FOR PRODUCTION & MANUFACTURING

Wood Works- Experience Record
Bernice Convention Hall



INVESTMENT COMPANY FOR PRODUCTION & MANUFACTURING

Wood Works– Experience Record
Bernice Convention Hall



INVESTMENT COMPANY FOR PRODUCTION & MANUFACTURING

Wood Works– Experience Record
Bernice Convention Hall



INVESTMENT COMPANY FOR PRODUCTION & MANUFACTURING

Wood Works- Experience Record
Bernice Convention Hall



INVESTMENT COMPANY FOR PRODUCTION & MANUFACTURING

Wood Works– Experience Record
Dip n Dip restaurant



INVESTMENT COMPANY FOR PRODUCTION & MANUFACTURING

Wood Works– Experience Record
Dip n Dip restaurant



INVESTMENT COMPANY FOR PRODUCTION & MANUFACTURING

Wood Works– Experience Record
Dip n Dip restaurant



INVESTMENT COMPANY FOR PRODUCTION & MANUFACTURING

Wood Works– Experience Record
Dip n Dip restaurant



INVESTMENT COMPANY FOR PRODUCTION & MANUFACTURING

Wood Works– Experience Record
Dip n Dip restaurant



INVESTMENT COMPANY FOR PRODUCTION & MANUFACTURING

Wood Works – Experience Record
EMAAR SALES CENTRE FOR UPTOWN CAIRO



INVESTMENT COMPANY FOR PRODUCTION & MANUFACTURING

Wood Works- Experience Record
EMAAR SALES CENTRE FOR UPTOWN CAIRO



INVESTMENT COMPANY FOR PRODUCTION & MANUFACTURING

Wood Works- Experience Record
EMAAR SALES CENTRE FOR UPTOWN CAIRO


ALMARASEM
DEVELOPMENT



INVESTMENT COMPANY FOR PRODUCTION & MANUFACTURING

Wood Works– Experience Record
EMAAR SALES CENTRE FOR UPTOWN CAIRO



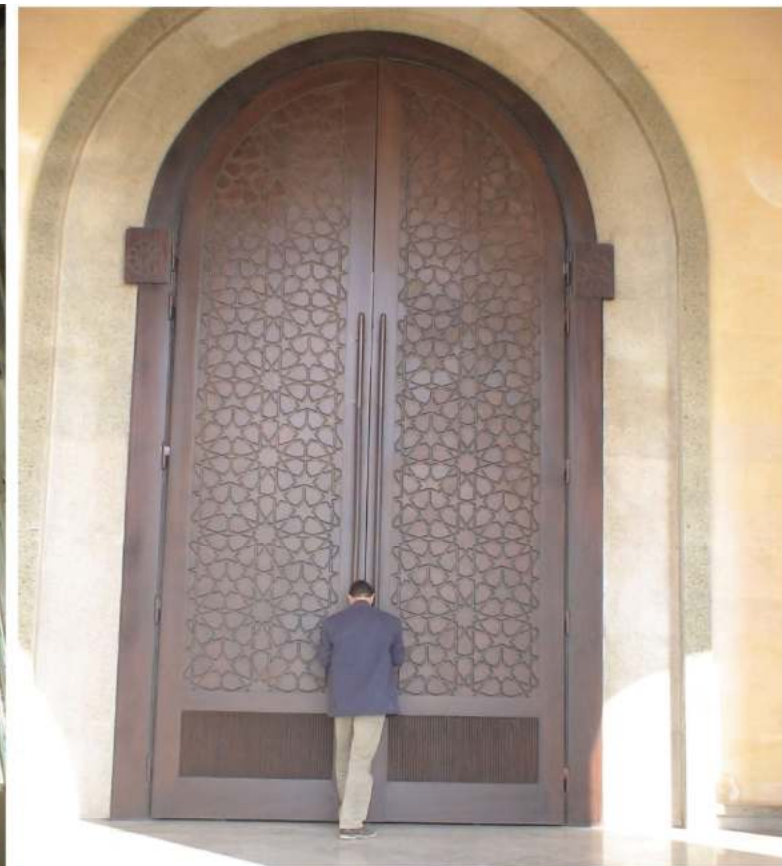
INVESTMENT COMPANY FOR PRODUCTION & MANUFACTURING

Wood Works– Experience Record
EMAAR SALES CENTRE FOR UPTOWN CAIRO



INVESTMENT COMPANY FOR PRODUCTION & MANUFACTURING

Wood Works– Experience Record
EMAAR SALES CENTRE FOR UPTOWN CAIRO



INVESTMENT COMPANY FOR PRODUCTION & MANUFACTURING

Wood Works- Experience Record
EMAAR SALES CENTRE FOR UPTOWN CAIRO



INVESTMENT COMPANY FOR PRODUCTION & MANUFACTURING

Wood Works– Experience Record
EMAAR SALES CENTRE FOR UPTOWN CAIRO



INVESTMENT COMPANY FOR PRODUCTION & MANUFACTURING

Wood Works- Experience Record
EMAAR SALES CENTRE FOR UPTOWN CAIRO



INVESTMENT COMPANY FOR PRODUCTION & MANUFACTURING

Wood Works- Experience Record
EMAAR SALES CENTRE FOR UPTOWN CAIRO



INVESTMENT COMPANY FOR PRODUCTION & MANUFACTURING

Wood Works- Experience Record
EMAAR SALES CENTRE FOR UPTOWN CAIRO



INVESTMENT COMPANY FOR PRODUCTION & MANUFACTURING

Wood Works- Experience Record
EMAAR SALES CENTRE FOR UPTOWN CAIRO



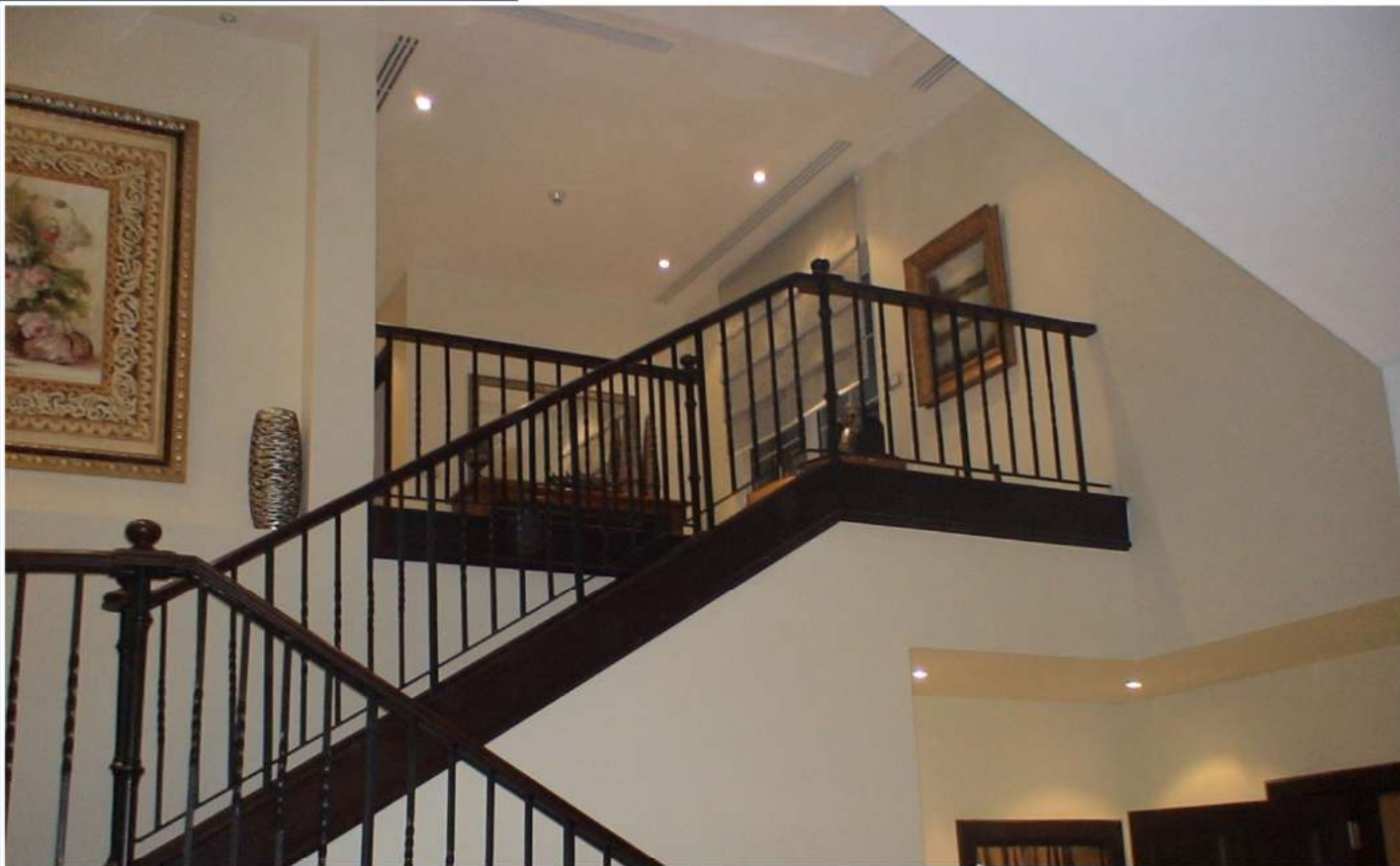
INVESTMENT COMPANY FOR PRODUCTION & MANUFACTURING

Wood Works– Experience Record
EMAAR SALES CENTRE FOR UPTOWN CAIRO



INVESTMENT COMPANY FOR PRODUCTION & MANUFACTURING

Wood Works- Experience Record
EMAAR SALES CENTRE FOR UPTOWN CAIRO



INVESTMENT COMPANY FOR PRODUCTION & MANUFACTURING

Wood Works– Experience Record
Al Hanove Travel office



INVESTMENT COMPANY FOR PRODUCTION & MANUFACTURING

Wood Works– Experience Record
Al Hanove Travel office



INVESTMENT COMPANY FOR PRODUCTION & MANUFACTURING

Wood Works– Experience Record
Al Hanove Travel office



INVESTMENT COMPANY FOR PRODUCTION & MANUFACTURING

Wood Works– Experience Record
Al Hanove Travel office



INVESTMENT COMPANY FOR PRODUCTION & MANUFACTURING

Wood Works– Experience Record
Al Hanove Travel office



INVESTMENT COMPANY FOR PRODUCTION & MANUFACTURING

Wood Works– Experience Record
Al Hanove Travel office



INVESTMENT COMPANY FOR PRODUCTION & MANUFACTURING

Wood Works- Experience Record

Al Hanove Travel office



INVESTMENT COMPANY FOR PRODUCTION & MANUFACTURING

Wood Works– Experience Record
Al Hanove Travel office



INVESTMENT COMPANY FOR PRODUCTION & MANUFACTURING

Wood Works– Experience Record

Al Hanove Travel office



INVESTMENT COMPANY FOR PRODUCTION & MANUFACTURING

Wood Works– Experience Record
Al Hanove Travel office



INVESTMENT COMPANY FOR PRODUCTION & MANUFACTURING

Wood Works- Experience Record

Al Hanove Travel office



INVESTMENT COMPANY FOR PRODUCTION & MANUFACTURING

Wood Works– Experience Record
AL Rahma mosque



INVESTMENT COMPANY FOR PRODUCTION & MANUFACTURING

Wood Works– Experience Record
AL Rahma mosque



INVESTMENT COMPANY FOR PRODUCTION & MANUFACTURING

Wood Works– Experience Record
AL Rahma mosque



INVESTMENT COMPANY FOR PRODUCTION & MANUFACTURING

Wood Works– Experience Record
KHATEM AL MORSALIN MOSQUE



INVESTMENT COMPANY FOR PRODUCTION & MANUFACTURING

Wood Works– Experience Record
KHATEM AL MORSALIN MOSQUE



INVESTMENT COMPANY FOR PRODUCTION & MANUFACTURING

Wood Works– Experience Record
KHATEM AL MORSALIN MOSQUE



INVESTMENT COMPANY FOR PRODUCTION & MANUFACTURING

Wood Works– Experience Record
KHATEM AL MORSALIN MOSQUE



INVESTMENT COMPANY FOR PRODUCTION & MANUFACTURING

Wood Works- Experience Record
KHATEM AL MORSALIN MOSQUE



INVESTMENT COMPANY FOR PRODUCTION & MANUFACTURING

Wood Works– Experience Record
KHATEM AL MORSALIN MOSQUE



INVESTMENT COMPANY FOR PRODUCTION & MANUFACTURING

Wood Works- Experience Record
CAIRO INTERNATIONAL AIRPORT



INVESTMENT COMPANY FOR PRODUCTION & MANUFACTURING

Wood Works– Experience Record
Cairo airport



INVESTMENT COMPANY FOR PRODUCTION & MANUFACTURING

Wood Works– Experience Record
Cairo airport



INVESTMENT COMPANY FOR PRODUCTION & MANUFACTURING

Wood Works– Experience Record
Cairo airport



INVESTMENT COMPANY FOR PRODUCTION & MANUFACTURING

Wood Works– Experience Record
Cairo airport



INVESTMENT COMPANY FOR PRODUCTION & MANUFACTURING

Wood Works– Experience Record
Cairo airport



INVESTMENT COMPANY FOR PRODUCTION & MANUFACTURING

Wood Works– Experience Record
Cairo airport



INVESTMENT COMPANY FOR PRODUCTION & MANUFACTURING

Wood Works – General Fabrication
Office furniture



INVESTMENT COMPANY FOR PRODUCTION & MANUFACTURING

Wood Works – General Fabrication

Office furniture



INVESTMENT COMPANY FOR PRODUCTION & MANUFACTURING

Wood Works – General Fabrication Office furniture



INVESTMENT COMPANY FOR PRODUCTION & MANUFACTURING

Wood Works – General Fabrication Office furniture



INVESTMENT COMPANY FOR PRODUCTION & MANUFACTURING

Wood Works – General Fabrication
Office furniture



INVESTMENT COMPANY FOR PRODUCTION & MANUFACTURING

Wood Works – General Fabrication
Office furniture



INVESTMENT COMPANY FOR PRODUCTION & MANUFACTURING

Wood Works – General Fabrication
Office furniture



INVESTMENT COMPANY FOR PRODUCTION & MANUFACTURING

Wood Works – General Fabrication

Office furniture



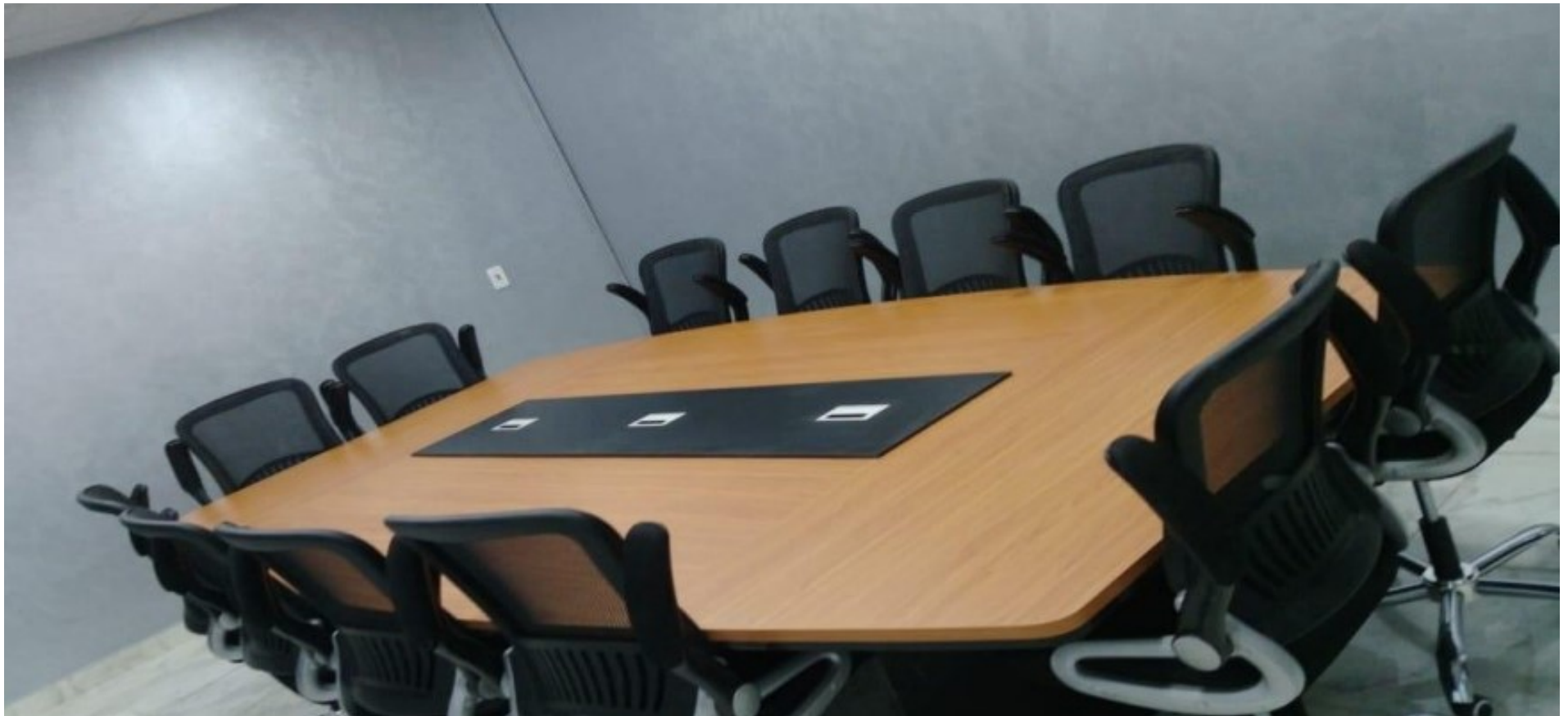
INVESTMENT COMPANY FOR PRODUCTION & MANUFACTURING

Wood Works – General Fabrication
Office furniture



INVESTMENT COMPANY FOR PRODUCTION & MANUFACTURING

Wood Works – General Fabrication
Office furniture



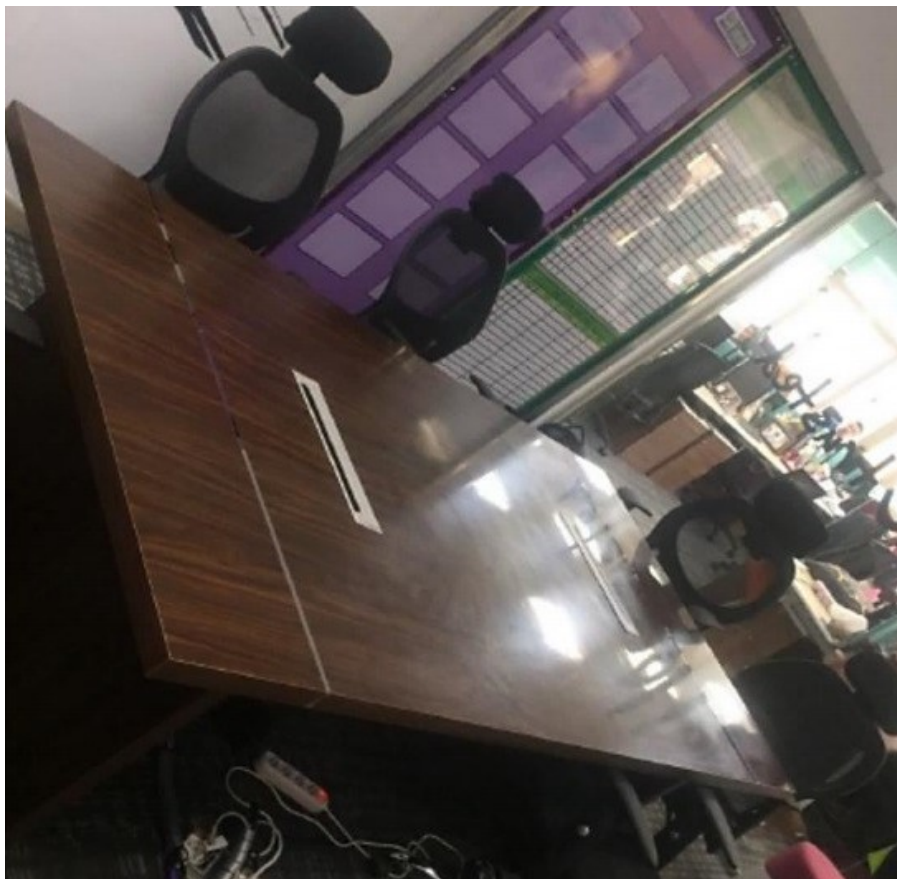
INVESTMENT COMPANY FOR PRODUCTION & MANUFACTURING

Wood Works – General Fabrication
Office furniture



INVESTMENT COMPANY FOR PRODUCTION & MANUFACTURING

Wood Works – General Fabrication
Office furniture



INVESTMENT COMPANY FOR PRODUCTION & MANUFACTURING

Wood Works – General Fabrication
Office furniture



INVESTMENT COMPANY FOR PRODUCTION & MANUFACTURING

Wood Works – General Fabrication
Office furniture



INVESTMENT COMPANY FOR PRODUCTION & MANUFACTURING

Wood Works – General Fabrication
Office furniture



INVESTMENT COMPANY FOR PRODUCTION & MANUFACTURING

Wood Works – General Fabrication
Office furniture



INVESTMENT COMPANY FOR PRODUCTION & MANUFACTURING

Wood Works – General Fabrication
Office furniture



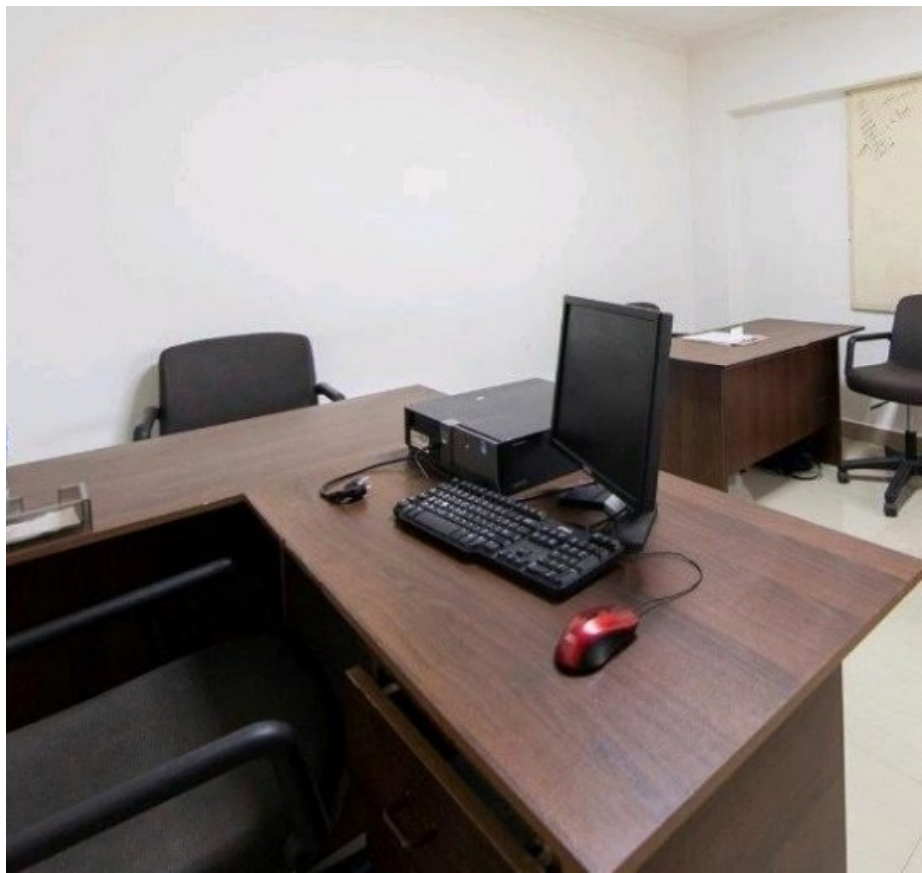
INVESTMENT COMPANY FOR PRODUCTION & MANUFACTURING

Wood Works – General Fabrication Office furniture



INVESTMENT COMPANY FOR PRODUCTION & MANUFACTURING

Wood Works – General Fabrication Office furniture



INVESTMENT COMPANY FOR PRODUCTION & MANUFACTURING

Wood Works – General Fabrication

Pergola & Covering



INVESTMENT COMPANY FOR PRODUCTION & MANUFACTURING

Wood Works – General Fabrication
Pergola & Covering



INVESTMENT COMPANY FOR PRODUCTION & MANUFACTURING

Wood Works – General Fabrication Pergola & Covering



INVESTMENT COMPANY FOR PRODUCTION & MANUFACTURING

Wood Works – General Fabrication
Pergola & Covering



INVESTMENT COMPANY FOR PRODUCTION & MANUFACTURING

Wood Works – General Fabrication
Pergola & Covering



INVESTMENT COMPANY FOR PRODUCTION & MANUFACTURING

Wood Works – General Fabrication
Pergola & Covering



INVESTMENT COMPANY FOR PRODUCTION & MANUFACTURING

ICPM -Precast Concrete

Precast Plant Works



ALMARASEM



ICPM -Precast Concrete

ICPM Pre-Cast factory located in Badr city on a total area of 21,000 sqm, with production capacity up to 160 m³ per shift for vertical tables which provides fair face production from both sides, and 40 horizontal tables of different sizes (10 fixed and others are tilting. Total Capacity 60,000 m³ / Year



ICPM - Precast Concrete



ALMARASEEM



INVESTMENT COMPANY FOR PRODUCTION & MANUFACTURING

ICPM - Precast Concrete Experience Record



UPTOWN CAIRO PERMENANT FENCE



MUP ABOU SULTAN



ALLERGRIA



MALL OF ARABIA



UPTOWN CAIRO TEMP. FENCE



MIVIDA

INVESTMENT COMPANY FOR PRODUCTION & MANUFACTURING

ICPM - Precast Concrete
Experience Record

ABU SULTAN EGYPT
MEDICAL UNION PHARMACEUTICALS WAREHOUSE



INVESTMENT COMPANY FOR PRODUCTION & MANUFACTURING

ABU SULTAN EGYPT
MEDICAL UNION PHARMACEUTICALS WAREHOUSE

ABU SULTAN EGYPT

Project Description	Pre-cast concrete cladding Pre-cast concrete cladding (about 24,000 sq. meters of 12m height and 5m width panels)
Consultant	ECG



INVESTMENT COMPANY FOR PRODUCTION & MANUFACTURING

ICPM - Precast Concrete
Experience Record

ABU SULTAN EGYPT
MEDICAL UNION PHARMACEUTICALS WAREHOUSE



INVESTMENT COMPANY FOR PRODUCTION & MANUFACTURING

ICPM - Precast Concrete
Experience Record

Mall of Arabia
SIX OCTOBER CITY


ALMARASEM



INVESTMENT COMPANY FOR PRODUCTION & MANUFACTURING

ICPM - Precast Concrete
Experience Record

Mall of Arabia
SIX OCTOBER CITY



Mall of Arabia

Project Description

MALL OF ARABIA PRE-CAST WALL

About 6800 square meters of pre-cast walls.

Consultant

ECG



INVESTMENT COMPANY FOR PRODUCTION & MANUFACTURING

ICPM - Precast Concrete
Experience Record

Mall of Arabia
SIX OCTOBER CITY



INVESTMENT COMPANY FOR PRODUCTION & MANUFACTURING

ICPM - Precast Concrete
Experience Record

Mall of Arabia
SIX OCTOBER CITY



INVESTMENT COMPANY FOR PRODUCTION & MANUFACTURING

ICPM - Precast Concrete
Experience Record

Uptown Cairo pre-cast Fence



INVESTMENT COMPANY FOR PRODUCTION & MANUFACTURING

ICPM - Precast Concrete Experience Record

uptowen pre-cast Fence



ALMARASEM

uptowen pre-cast Fence

Project Description

Supply and Install over 3200 m pre-cast concrete temporary fence (2.5 m height)
Supply and Install over 3200 m pre-cast concrete barriers (90cm height)
Supply & Install security gates (10m heights and 4m width)

Consultant

ECG



ICPM - Precast Concrete
Experience Record

ALLEGRIA RESEDENTIAL COMPOUND SHEIKH ZAYED CITY



INVESTMENT COMPANY FOR PRODUCTION & MANUFACTURING

ICPM - Precast Concrete Experience Record

ALLEGRIA RESEDENTIAL COMPOUND SHEIKH ZAYED CITY



ALMARASEM

ALLEGRIA RESEDENTIAL COMPOUND

Project Description	About 22,700 meters pre-cast fence for Villas. About 2,000 meters pre-cast perimeter fence. Guard Houses. Steel fence
---------------------	--

Consultant

MZECH
(MEDHAT ABOZAID – EGYPTIAN CONSULTANT
HOUSE)



ICPM - Precast Concrete
Experience Record

40west pre-cast Fence



INVESTMENT COMPANY FOR PRODUCTION & MANUFACTURING

ICPM - Precast Concrete Experience Record

40west pre-cast Fence



40west pre-cast Fence

Project Description

Supply and Install over 710 m pre-cast Garden wall (2.5 m height)
SHEIKH ZAYED CITY SIX OF OCTOBER
DEVELOPMENT AND INVESTMENT
(SODIC)
Km 38 Cairo-Alexandria Desert Road -
Sheikh Zayed City, Giza, Egypt

Consultant

MZECH



ICPM - Precast Concrete
Experience Record

SHARM EL SHEIKH
EGYPTIAN AIRPORTS COMPANY



INVESTMENT COMPANY FOR PRODUCTION & MANUFACTURING

SHARM EL SHEIKH
EGYPTIAN AIRPORTS COMPANY

EGYPTIAN AIRPORTS COMPANY

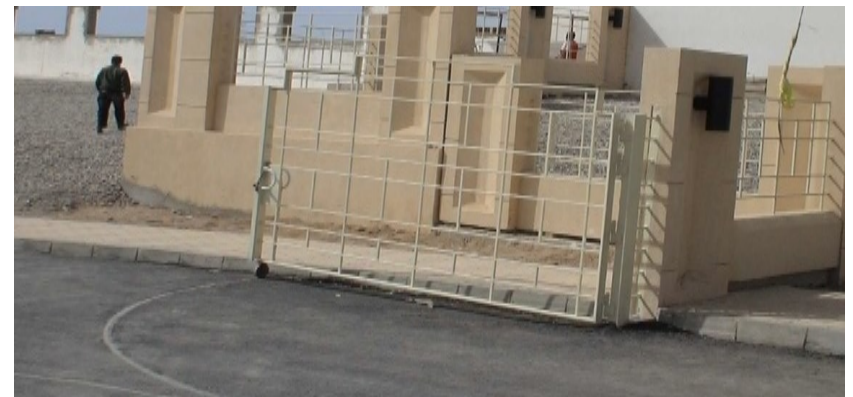
Project Description

**SHARM EL-SHEIKH AIRPORT NEW TERMINAL
BUILDING**

Aluminum Cladding works (About 27,3000 sq. Meter
Cladding)
Carpentry works: (Wall Cladding 3000 sq. Meter)
Architectural Steel works
Stainless steel works
Pre-cast concrete works

Consultant

DAR AL HANDASAH



ICPM - Precast Concrete Experience Record

Mivida pre-cast Fence

Project Description	<p>Supply and Install over 6000 m pre-cast concrete temporary fence (2.5 m height)</p> <p>Supply and Install about 10,000 m Ferforje steel fence for plots.</p> <p>Supply and Install about 1,000 steel gates for plots</p>
Consultant	<p>SITES COMPANY</p> <p>ALAMAR CONSULTING GROUP</p> <p>ECG (ENGINEERING CONSULTANTS GROUP)</p>

Mivida pre-cast Fence



ALMARASEM



ICPM -Precast Concrete
Experience Record

Al Burouj Pre cast Fence



ALMARASEM



INVESTMENT COMPANY FOR PRODUCTION & MANUFACTURING

ICPM -Precast Concrete
Experience Record

Al Burouj Pre cast Fence



ALMARASEM



INVESTMENT COMPANY FOR PRODUCTION & MANUFACTURING

ICPM - Precast Concrete
Experience Record

Al Burouj Pre cast Fence



INVESTMENT COMPANY FOR PRODUCTION & MANUFACTURING

ICPM -Precast Concrete Experience Record

Al Burouj Pre cast Fence



ALMARASEM

Al Borouj

Client

Capital Group

Consultant

ECG



INVESTMENT COMPANY FOR PRODUCTION & MANUFACTURING

ICPM -Precast Concrete
Experience Record

Al Burouj Pre cast Fence



ALMARASEM



INVESTMENT COMPANY FOR PRODUCTION & MANUFACTURING

ICPM -Precast Concrete
Running Projects

500 500 Hospital Egypt



ALMARASEM



INVESTMENT COMPANY FOR PRODUCTION & MANUFACTURING

ICPM -Precast Concrete
Running Projects

500 500 Hospital Egypt



ALMARASEM



INVESTMENT COMPANY FOR PRODUCTION & MANUFACTURING

ICPM -Precast Concrete
Running Projects

500 500 Hospital Egypt


ALMARASEM



INVESTMENT COMPANY FOR PRODUCTION & MANUFACTURING

ICPM -Precast Concrete
Running Projects

500 500 Hospital Egypt



ALMARASEM



INVESTMENT COMPANY FOR PRODUCTION & MANUFACTURING

ICPM -Precast Concrete
Running Projects

500 500 Hospital Egypt


ALMARASEM



INVESTMENT COMPANY FOR PRODUCTION & MANUFACTURING

ICPM -Precast Concrete
Running Projects

500 500 Hospital Egypt


ALMARASEM



INVESTMENT COMPANY FOR PRODUCTION & MANUFACTURING

ICPM -Precast Concrete
Running Projects

500 500 Hospital Egypt


ALMARASEM



INVESTMENT COMPANY FOR PRODUCTION & MANUFACTURING

ICPM -Precast Concrete
Running Projects

500 500 Hospital Egypt


ALMARASEM



INVESTMENT COMPANY FOR PRODUCTION & MANUFACTURING

ICPM -Precast Concrete
Running Projects

500 500 Hospital Egypt



INVESTMENT COMPANY FOR PRODUCTION & MANUFACTURING

ICPM -Precast Concrete
Running Projects

THE CROWN



INVESTMENT COMPANY FOR PRODUCTION & MANUFACTURING

ICPM -Precast Concrete
Running Projects

THE CROWN



INVESTMENT COMPANY FOR PRODUCTION & MANUFACTURING

ICPM -Precast Concrete
Running Projects

THE CROWN



ALMARASEM



INVESTMENT COMPANY FOR PRODUCTION & MANUFACTURING

ICPM -Precast Concrete

Running Projects



ALMARASEM

Palm Hills - Golf Extension

Client	Palm Hills
Consultant	AAW



Wood Ville

Client	Palm Hills
Consultant	Shaker



INVESTMENT COMPANY FOR PRODUCTION & MANUFACTURING

ICPM - Precast Concrete

Running Projects

Palm Valley Internal Fences

Client	Palm Hills
Consultant	Shaker

Palm Hills - New Cairo

Client	Palm Hills
Consultant	AAW



ALMARASEM



INVESTMENT COMPANY FOR PRODUCTION & MANUFACTURING

ICPM - Precast Concrete

Running Projects



ALMARASEM

Golf Views

Client	Palm Hills
Consultant	Shaker



Palm Hills - Crown

Client	Palm Hills
Consultant	AAW



INVESTMENT COMPANY FOR PRODUCTION & MANUFACTURING

ICPM -Precast Concrete

Running Projects

R5 - Administrative Capital

Client	AlMarasem
Consultant	ECG

SODIC -Forty West

Client	Sodic
Consultant	ECG



INVESTMENT COMPANY FOR PRODUCTION & MANUFACTURING

ICPM - Precast Concrete

Running Projects



ALMARASEM

500-500 HOSPITAL

Client

AL-MARASEM

Consultant

ECG



500 FEDDAN

Client

PALM HILLS

Consultant

SHAKER



INVESTMENT COMPANY FOR PRODUCTION & MANUFACTURING

ICPM -Aluminum Plant

Aluminum Plant Works


ALMARASEM



ICPM – Aluminum Plant Works

Aluminium Plant works in manufacturing of various Aluminium models and designs according to customer needs, with utilization of top quality Aluminum sections and accessories in the local market and those which are imported.

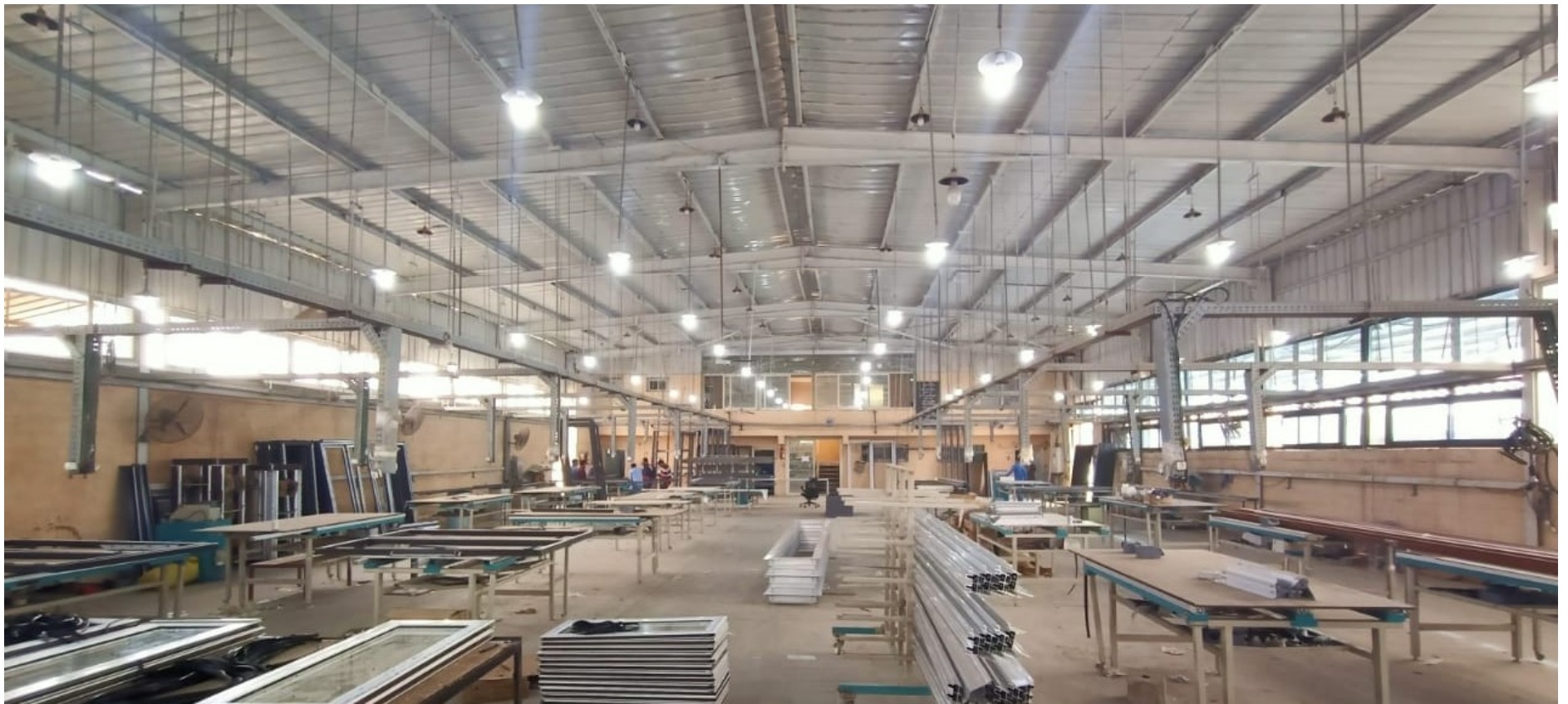
- Integrated production line with annual capacity to produce 300,000 m²/year of doors, windows and curtain walls.
- Production line for claddings with total capacity of 150,000 m²/year.



ICPM – Aluminum Plant Works



ALMARASEM



INVESTMENT COMPANY FOR PRODUCTION & MANUFACTURING

ICPM – Aluminum Plant Works



INVESTMENT COMPANY FOR PRODUCTION & MANUFACTURING

ICPM – Aluminum Plant Works



ALMARASEM



INVESTMENT COMPANY FOR PRODUCTION & MANUFACTURING

ICPM – Aluminum Plant Works

Aluminium Plant works in manufacturing of various Aluminium models and designs according to customer needs, with utilization of top quality aluminum sections and accessories in the local market and those which are imported.

- Integrated production line with annual capacity to produce **300,000 m²/year** of doors, windows and curtain walls.
- Production line for claddings with total capacity of **150,000 m²/year**.



INVESTMENT COMPANY FOR PRODUCTION & MANUFACTURING

ICPM – Aluminum Plant Works
Experience Record



CAIRO INTERNATIONAL AIRPORT



SHARM EL SHEIKH AIRPORT



NEW BALL ROOM – FAIRMONT HOTEL



AI REHAB RESEDENTIAL COMPOUND



AMIRA BEACH RESORT



AL HAYAT HEIGHTS

ICPM – Aluminum Plant Works
Experience Record



CAIRO INTERNATIONAL AIRPORT

Renovation of Transit Hall building Terminal 1 #Cairo Airport Egypt



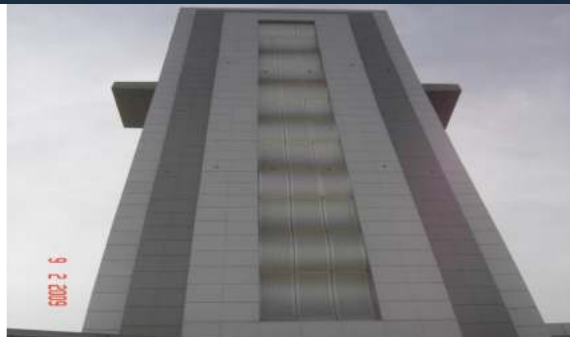
INVESTMENT COMPANY FOR
PRODUCTION & MANUFACTURING

INVESTMENT COMPANY FOR PRODUCTION & MANUFACTURING

ICPM – Aluminum Plant Works
Experience Record



ALMARASEM



CAIRO INTERNATIONAL AIRPORT

Renovation of Transit Hall building Terminal -1#Cairo International Airport-Egypt



INVESTMENT COMPANY FOR
PRODUCTION & MANUFACTURING

INVESTMENT COMPANY FOR PRODUCTION & MANUFACTURING

NEW TERMINAL BUILDING AT SHARM EL SHEIKH AIRPORT



INVESTMENT COMPANY FOR
PRODUCTION & MANUFACTURING

INVESTMENT COMPANY FOR PRODUCTION & MANUFACTURING

ICPM – Aluminum Plant Works
Experience Record



NEW TERMINAL BUILDING AT SHARM EL SHEIKH AIRPORT



INVESTMENT COMPANY FOR PRODUCTION & MANUFACTURING

NEW BALL ROOM –FAIRMONT HOTEL



INVESTMENT COMPANY FOR PRODUCTION & MANUFACTURING

ICPM – Aluminum Plant Works
Experience Record



ALMARASEEM



AI REHAB RESEDENTIAL COMPOUND



INVESTMENT COMPANY FOR
PRODUCTION & MANUFACTURING

333

INVESTMENT COMPANY FOR PRODUCTION & MANUFACTURING

ICPM – Aluminum Plant Works Experience Record



ALMARASEM



INVESTMENT COMPANY FOR PRODUCTION & MANUFACTURING

ICPM – Aluminum Plant Works
Experience Record



AI REHAB RESEDENTIAL COMPOUND



INVESTMENT COMPANY FOR
PRODUCTION & MANUFACTURING

INVESTMENT COMPANY FOR PRODUCTION & MANUFACTURING

AMIRA BEACH RESORT



INVESTMENT COMPANY FOR
PRODUCTION & MANUFACTURING

336

ICPM – Aluminum Plant Works
Experience Record



ALMARASEM



AMIRA BEACH RESORT



INVESTMENT COMPANY FOR
PRODUCTION & MANUFACTURING

337

INVESTMENT COMPANY FOR PRODUCTION & MANUFACTURING

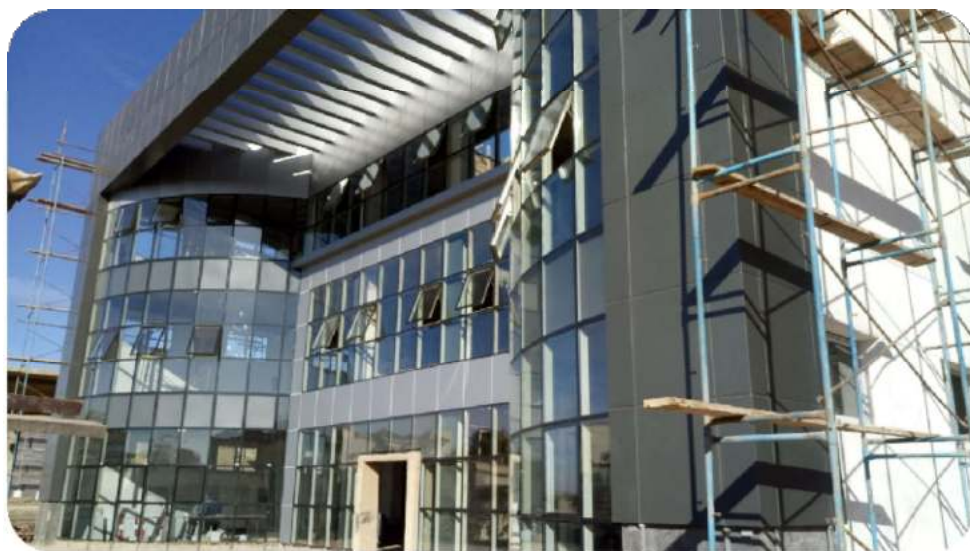
ICPM – Aluminum Running Projects

AL SHOROUK MALL

AL SHOROUK MALL

Client

INMA



INVESTMENT COMPANY FOR PRODUCTION & MANUFACTURING



ALMARASEM



ICPM – Aluminum Plant Works



ALMARASEEM

AL SHOROUK MALL



INVESTMENT COMPANY FOR PRODUCTION & MANUFACTURING

ICPM – Aluminum Plant Works

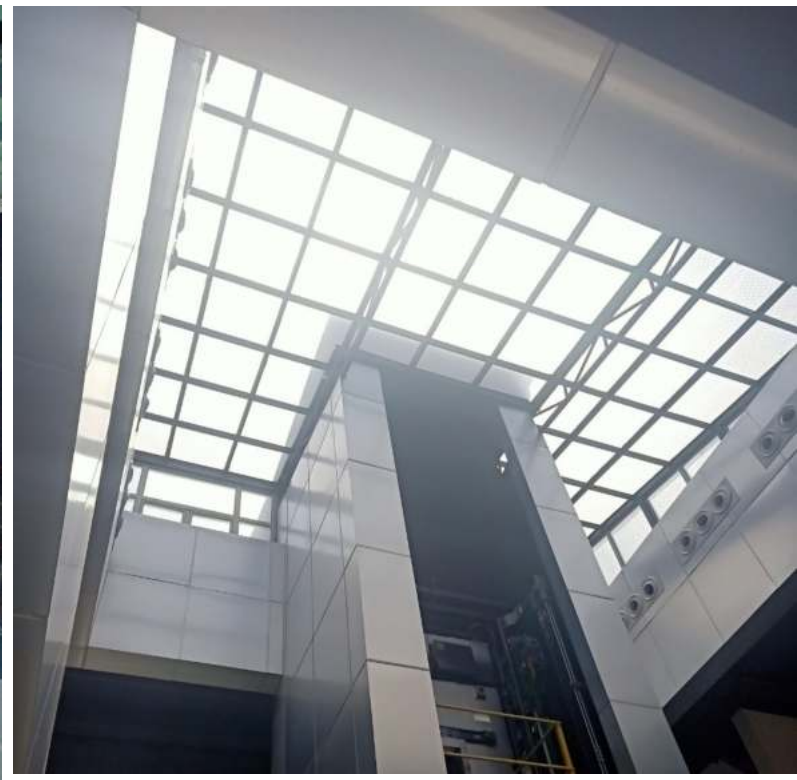
AL SHOROUK MALL



INVESTMENT COMPANY FOR PRODUCTION & MANUFACTURING

ICPM – Aluminum Plant Works

AL SHOROUK MALL



INVESTMENT COMPANY FOR PRODUCTION & MANUFACTURING

ICPM – Aluminum Plant Works

AL SHOROUK MALL



INVESTMENT COMPANY FOR PRODUCTION & MANUFACTURING

ICPM – Aluminum Plant Works



ALMARASEEM

AL SHOROUK MALL



INVESTMENT COMPANY FOR PRODUCTION & MANUFACTURING

ICPM – Aluminum
Running Projects



Beverly Hills - Zayed



INVESTMENT COMPANY FOR PRODUCTION & MANUFACTURING

ICPM –Aluminum
Running Projects



Beverly Hills - Zayed



INVESTMENT COMPANY FOR PRODUCTION & MANUFACTURING

ICPM – Aluminum Running Projects



ALMARASEM

Al - Marasem Hospital New Cairo

Client

Al-Marasem



INVESTMENT COMPANY FOR PRODUCTION & MANUFACTURING

ICPM – Aluminum
Running Projects



INVESTMENT COMPANY FOR PRODUCTION & MANUFACTURING

ICPM – Aluminum
Running Projects



ALMARASEM



INVESTMENT COMPANY FOR PRODUCTION & MANUFACTURING

ICPM –Aluminum
Running Projects



ALMARASEM



INVESTMENT COMPANY FOR PRODUCTION & MANUFACTURING

ICPM – Aluminum

Running Projects Central Park of the new administrative capital



ALMARASEM



INVESTMENT COMPANY FOR PRODUCTION & MANUFACTURING



ALMARASEM

ICPM – Aluminum

Running Projects Central Park of the new administrative capital



INVESTMENT COMPANY FOR PRODUCTION & MANUFACTURING



ALMARASEM

ICPM – Aluminum

Running Projects Central Park of the new administrative capital



INVESTMENT COMPANY FOR PRODUCTION & MANUFACTURING



ALMARASEM

ICPM – Aluminum

Running Projects Central Park of the new administrative capital



INVESTMENT COMPANY FOR PRODUCTION & MANUFACTURING

ICPM – Aluminum Plant Works

Alexandria Eye Hospital



INVESTMENT COMPANY FOR PRODUCTION & MANUFACTURING

ICPM – Aluminum Plant Works

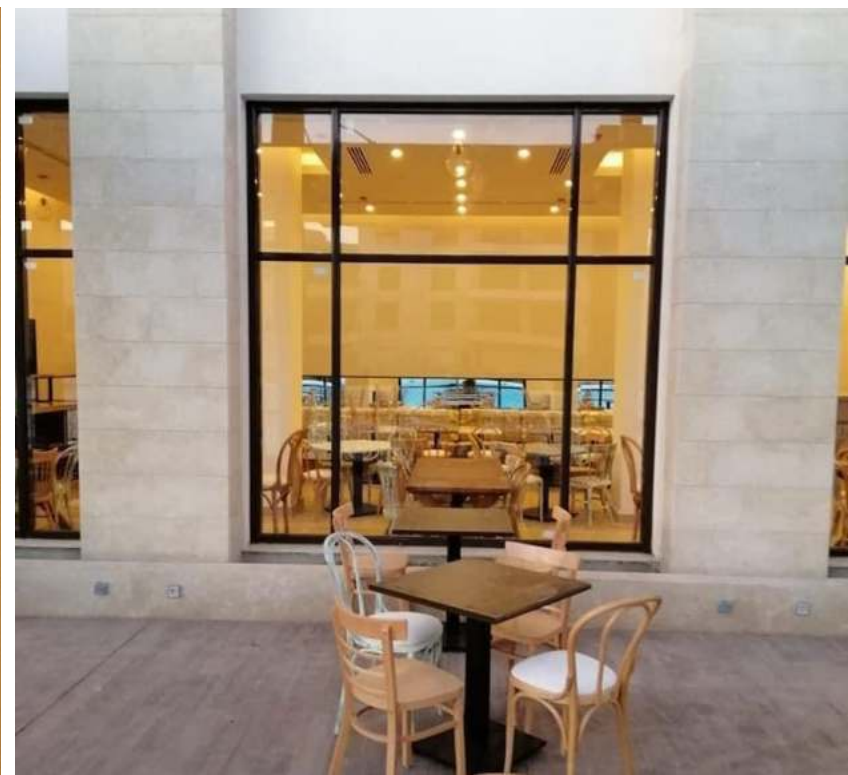
Alexandria Eye Hospital



INVESTMENT COMPANY FOR PRODUCTION & MANUFACTURING

ICPM – Aluminum Plant Works

Marassi north coast



INVESTMENT COMPANY FOR PRODUCTION & MANUFACTURING

ICPM – Aluminum Plant Works

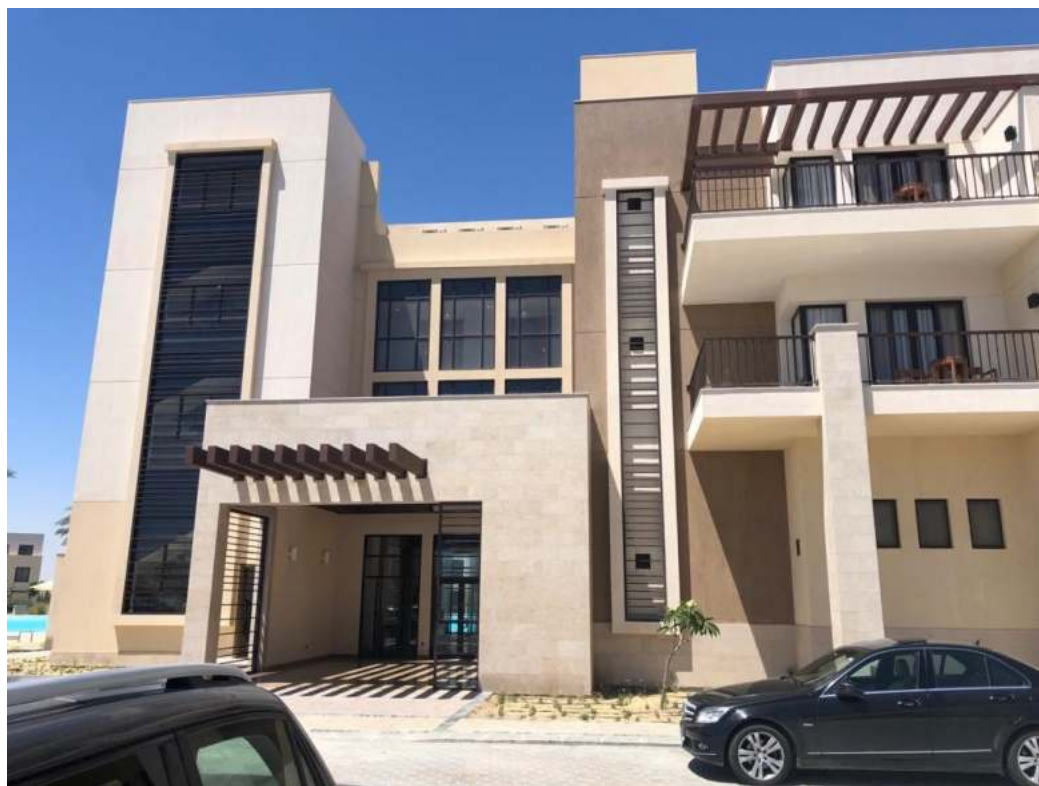
Marassi north coast



INVESTMENT COMPANY FOR PRODUCTION & MANUFACTURING

ICPM – Aluminum Plant Works

Marassi north coast



INVESTMENT COMPANY FOR PRODUCTION & MANUFACTURING

ICPM – Aluminum Plant Works

Marassi north coast

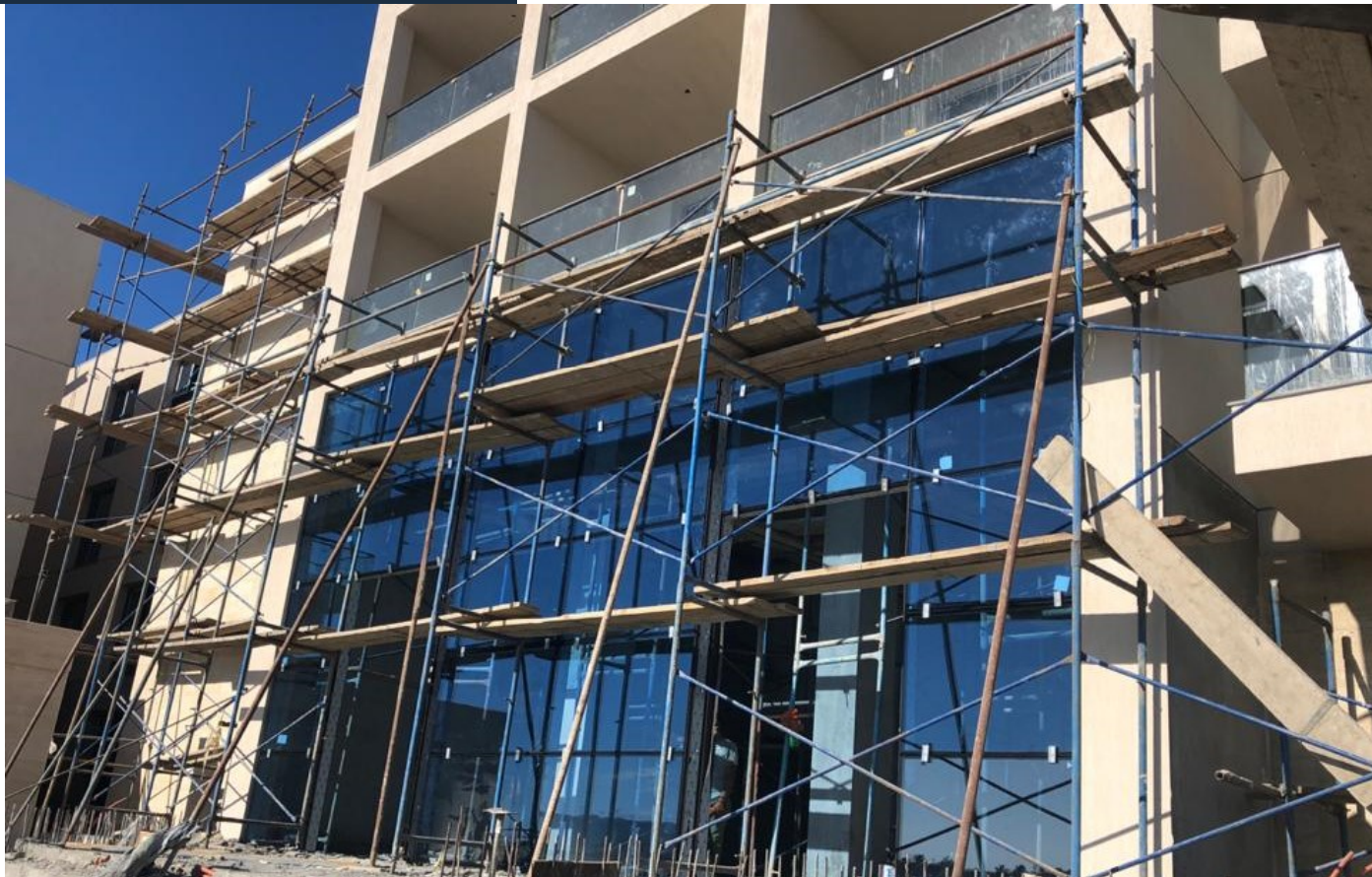


INVESTMENT COMPANY FOR PRODUCTION & MANUFACTURING

ICPM – Service steel Doors
Marina lagoon



ALMARASEM



INVESTMENT COMPANY FOR PRODUCTION & MANUFACTURING

ICPM – Aluminum Plant Works

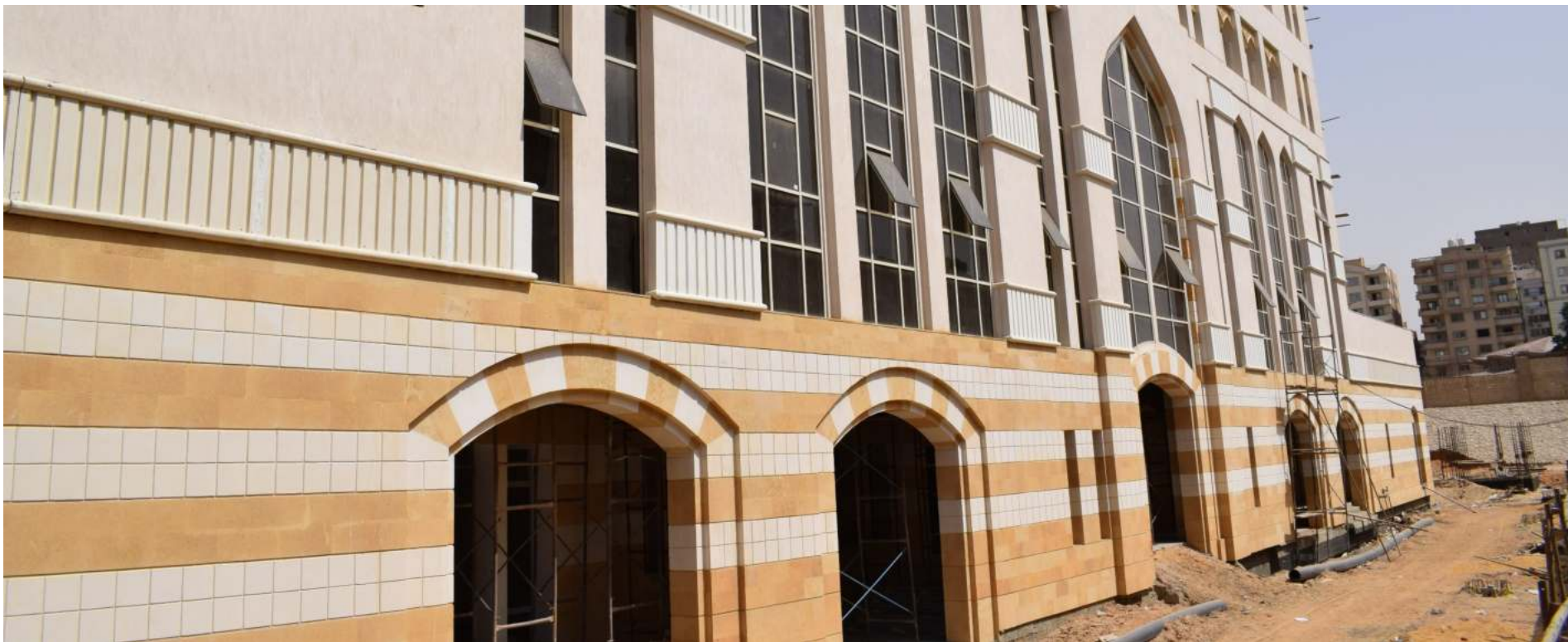
Al AZHAR Pharmacy & Dentistry College



INVESTMENT COMPANY FOR PRODUCTION & MANUFACTURING

ICPM – Aluminum Plant Works

Al AZHAR Pharmacy & Dentistry College



INVESTMENT COMPANY FOR PRODUCTION & MANUFACTURING

ICPM – Aluminum Plant Works

Al AZHAR Pharmacy & Dentistry College



ALMARASEEM



INVESTMENT COMPANY FOR PRODUCTION & MANUFACTURING

ICPM – Aluminum Plant Works

Al AZHAR Pharmacy & Dentistry College



ALMARASEM



INVESTMENT COMPANY FOR PRODUCTION & MANUFACTURING



ALMARASEM

ICPM – Aluminum Running Projects

SODIC

Client

SODIC



INVESTMENT COMPANY FOR PRODUCTION & MANUFACTURING



ALMARASEM

ICPM – Aluminum Running Projects

R3

Client

New Urban Communities Authority



INVESTMENT COMPANY FOR PRODUCTION & MANUFACTURING

ICPM - CEMENTATIOUS



ALMARASEM

CEMENTATIOUS PLANT



CEMENTATIOUS WORKS

- Integral production line equipped with modern automatic machine that enable us to produce: Cement blocks (different sizes), Solid bricks and interlock (different shapes) with production capacity that reaches up to 100,000 unit/day.
- New modern automatic machine that enables us to produce: Cement blocks (different sizes), Solid bricks and interlock (different shapes) with production capacity that reaches up to 140,000 unit/day , for Administrative Capital projects.
- Factory area: 6,400.0 m2.



ICPM -CEMENTATIOUS

CEMENTATIOUS WORKS


ALMARASEM



INVESTMENT COMPANY FOR PRODUCTION & MANUFACTURING

ICPM - CEMENTATIOUS

CEMENTATIOUS WORKS



ALMARASEM



INVESTMENT COMPANY FOR PRODUCTION & MANUFACTURING

EXPERIENCE RECORD

- 1. Rehab City Project.**
- 2. Rehab Sports Club Project.**
- 3. Rehab Mall Project.**
- 4. Amira Resort (Ras Sedr).**
- 5. Heliopolise Club Project – Shourouq City.**
- 6. Alegria Compound.**



ICPM - CEMENTATIOUS

INTERLOCK WORKS – RECTANGULAR SHAPE



ALMARASEM



INVESTMENT COMPANY FOR PRODUCTION & MANUFACTURING

ICPM -CEMENTATIOUS

INTERLOCK WORKS – RECTANGULAR SHAPE



ALMARASEM



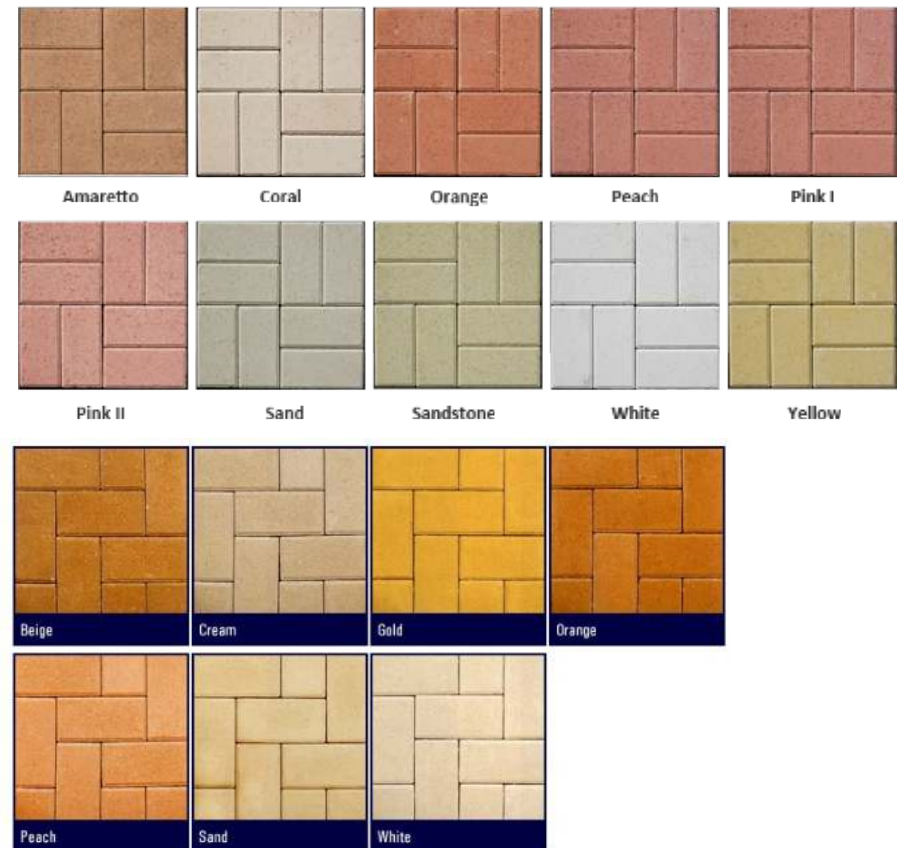
INVESTMENT COMPANY FOR PRODUCTION & MANUFACTURING

ICPM - CEMENTATIOUS

INTERLOCK WORKS – RECTANGULAR SHAPE



ALMARASEM



INVESTMENT COMPANY FOR PRODUCTION & MANUFACTURING

ICPM -CEMENTATIOUS

INTERLOCK WORKS – I SHAPE



ALMARASEM



I-SHAPE



INVESTMENT COMPANY FOR PRODUCTION & MANUFACTURING

ICPM -CEMENTATIOUS

INTERLOCK WORKS – ZIG ZAG SHAPE



ALMARASEM



INVESTMENT COMPANY FOR PRODUCTION & MANUFACTURING

Running Projects

- 1. Mivida Project.**
- 2. Al bo'oth City – Al Azhar Al Shareef. (El-Darasah)**
- 3. Al bo'oth City – Al Azhar Al Shareef. (Tanta)**
- 4. NEW Al bo'oth City – Al Azhar Al Shareef. (New Cairo)**
- 5. Pharmacy College (Girls) – Al Azhar Al Shareef.**
- 6. Dentistry College (Girls) – Al Azhar Al Shareef.**





ALMARASEM

INTERLOCK WORKS

ICPM -CEMENTATIOUS

مواصفات البلوكات المفرغة

م	المواصفات	المقاس بالـ (Cm)		
		40×20×25	40×20×20	40×20×12
1	متوسط الوزن (كجم)	21	17	12.5
2	كثافة البلوك (كجم / م³)	1050	1060	1300
3	سمك العصب الطولي والعرضي (m m)	25	25	25
4	عدد البلوكات للمتر المربع	12.5	12.5	12.5
5	عدد البلوكات للمتر المكعب	50	62.5	104
6	عدد البلوكات في البالته	73.5	87.5	129.5
7	اجهاد الكسر (كجم/سم²)	70	70	70
8	الامتصاص كجم / م³	180	180	180

أولاً يصنع المنتج من الخامات التالية :

- 1- الاسمنت بورتلاند عادي من شركات معتمدة ومطابق للمواصفات المصرية.
- 2- رمل مطابق للمواصفات المصرية (١١٠٩ كود E).
- 3- كسر دولوميت مندرج مطابق للمواصفات المصرية (١١٠٨ كود E).

ثانياً المواصفات:

- 1- المنتج مطابق للمواصفات (المصرية ١٢٩٢ كود E والبريطانية ٦٠٧٣ كود B والامريكية ١٢٩٩ ASTM).

ثالثاً المقاومة للحريق:

- 1- يقاوم المنتج الحريق لمدة ٢ ساعة.

رابعاً تداول المنتج:

- 1- يتم التداول اتوماتيكياً على بلطات خشب بعدد (٧) رصات محزمه بشمبر رأسي وأفقى، يتم التحميل على السيارات بأوناش شوكة (كلارك)



مواصفات الطوب المصمت

م	المواصفات	المقاس بالـ (Cm)	
		20×10×6	25×12×6
1	متوسط الوزن (كجم)	2.35	4
2	كثافة البلوك كجم / م³	2200	2200
4	عدد البلوكات للمتر المكعب	833	555
5	عدد البلوكات للمتر المربع	83.3	66.7
7	اجهاد الكسر (كجم/سم²)	200	200
8	الامتصاص كجم / م³	120	120

أولاً يصنع المنتج من الخامات التالية :

- 1- الاسمنت بورتلاند عادي من شركات معتمدة ومطابق للمواصفات المصرية.
- 2- رمل مطابق للمواصفات المصرية (١١٠٩ كود E).
- 3- كسر دولوميت مندرج مطابق للمواصفات المصرية (١١٠٨ كود E).

ثانياً المواصفات:

- 1- المنتج مطابق للمواصفات (المصرية ١٢٩٢ كود E والبريطانية ٦٠٧٣ كود B والامريكية ١٢٩٩ ASTM).

ثالثاً المقاومة للحريق:

- 1- يقاوم المنتج الحريق لمدة ٢ ساعة.

رابعاً تداول المنتج:

- 1- يتم التداول اتوماتيكياً على بلطات خشب بعدد (١٠) رصات محزمه بشمبر رأسي وأفقى، يتم التحميل على السيارات بأوناش شوكة (كلارك)



INVESTMENT COMPANY FOR PRODUCTION & MANUFACTURING

ICPM - CEMENTATIOUS

INTERLOCK WORKS

Research Center of
Properties and Testing of Materials
And Quality Control

Engineering Consulting Center
Faculty of Eng. - Ain Shams Univ.

MRC

وحدة أبحاث
خواص واختبار المواد
وضبط الجودة
مركز الاستشارات الهندسية
كلية الهندسة - جامعة عين شمس

رقم التقرير : F 0110/2018
التاريخ : ٢٠١٨/٠٢/٢٤

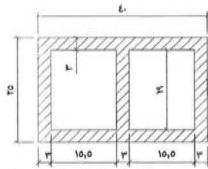
تقرير عن نتائج اختبار الضغط على عينات من البلوكات الأسمنتية المفرغة

العميل : الشركة الاستشارية للنتاج والتصنيع (I.C.P.M.)
المشروع :

ورد إلى وحدة أبحاث خواص واختبار المواد وضبط الجودة - كلية الهندسة - جامعة عين شمس - خطاب من الشركة الاستشارية للنتاج والتصنيع بخصوص إجراء اختبار الضغط على عينات من البلوكات الأسمنتية المفرغة.

العينات الموردة :

- عدد "١" عينات من البلوكات الأسمنتية المفرغة مقاس حوالي ٢٠×٢٥×٤٠ سم بأبعاد كما هو موضح بالشكل - مصلى الكون بلوك.



شكل يوضح متوسط أبعاد البلوكات الموردة بالمستقيم

تم توريد العينات بتاريخ ٢٠١٨/٠٢/١٨ إلى الوحدة بمعرفة العميل وعلى مسؤوليته وتم أخذ بيانات العينات من الخطاب الموجه من العميل إلى الوحدة.

الاختبارات المطلوبة :

- اختبار تعيين النسبة المئوية للأمتصاص
- اختبار تعيين مقاومة الضغط



٢/١

Research Center of
Properties and Testing of Materials
And Quality Control

Engineering Consulting Center
Faculty of Eng. - Ain Shams Univ.

MRC

وحدة أبحاث
خواص واختبار المواد
وضبط الجودة
مركز الاستشارات الهندسية
كلية الهندسة - جامعة عين شمس

رقم التقرير : F 0110/2018
التاريخ : ٢٠١٨/٠٢/٢٤

نتائج الاختبار

١- اختبار تعيين النسبة المئوية للأمتصاص:

تم إجراء اختبار تعيين النسبة المئوية للأمتصاص على عدد (٣) عينات من البلوكات الأسمنتية المفرغة الموردة وكانت نتائج الاختبار كما يلي:

م	الوزن المشبع (جم)	الوزن الجاف (جم)	الوزن المغمور (جم)	ثقلية الغرسة (جم/سم ³)	الأمتصاص (%)	الأمتصاص (جم/سم ³)
١	٢٢٦٦٤	٢١٢٠٨	٢٢٧٤٥	٢١٣٨	٦,٨٧	١٤٦,٧٩
٢	٢٢٤٥٠	٢١١٦٤	٢٢٤٤١	٢١٥٨	٦,٠٨	١٣١,١٠
٣	٢٢٣٤١	٢١١١٩	٢٢٦٨١	٢١٨٧	٥,٧٩	١٢٦,٥٤

٢- اختبار تعيين مقاومة الضغط:

تم تعيين مقاومة الضغط لعدد (٣) عينات من البلوكات الموردة بحالتها وقت التوريد (طبقاً للمواصفات القياسية المصرية رقم ١٢٩٢-٢٠٠٥)، وكانت نتائج الاختبار كما يلي:

م	المساحة (سم ²)	المساحة الصافية لمقطع العينة (سم ²)	الوزن وقت التوريد (جم)	حمل الانهيار (كilon نيوتن)	إجهاد الكسر (نيوتن/سم ²)
١	١٩,٨	٤١١٠٠	٢١٤٦٠	٥٥٠	٢٣,٣٨
٢	٢٠,٢	٤١١٠٠	٢١٢٠٠	٤٩٠	١١,٩٢
٣	٢٠,٢	٤١١٠٠	٢١٢٥٥	٦٠٠	١٤,٦٠

* تم حساب إجهاد الكسر على أساس المساحة الصافية لمقطع العينة.



أعد التقرير
م.م / لين زكريا

راجع التقرير

٢/٢

١ شى السرايات - ميدان عبده باشا - العباسية ١١٥١٧ - القاهرة - ت/فاكس : ٢٤٦٧٤٠٢٦
1 El-Sarayati St., Abbasia 11517, Cairo, Tel. & Fax : 24674026

Research Center of
Properties and Testing of Materials
And Quality Control

Engineering Consulting Center
Faculty of Eng. - Ain Shams Univ.

MRC

وحدة أبحاث
خواص واختبار المواد
وضبط الجودة
مركز الاستشارات الهندسية
كلية الهندسة - جامعة عين شمس

رقم التقرير : F 0109/2018
التاريخ : ٢٠١٨/٠٢/٢٤

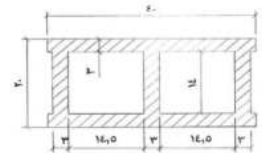
تقرير عن نتائج اختبار الضغط على عينات من البلوكات الأسمنتية المفرغة

العميل : الشركة الاستشارية للنتاج والتصنيع (I.C.P.M.)
المشروع :

ورد إلى وحدة أبحاث خواص واختبار المواد وضبط الجودة - كلية الهندسة - جامعة عين شمس - خطاب من الشركة الاستشارية للنتاج والتصنيع بخصوص إجراء اختبار الضغط على عينات من البلوكات الأسمنتية المفرغة.

العينات الموردة :

- عدد "٣" عينات من البلوكات الأسمنتية المفرغة مقاس حوالي ٢٠×٢٥×٤٠ سم بأبعاد كما هو موضح بالشكل - مصلى الكون بلوك.



شكل يوضح متوسط أبعاد البلوكات الموردة بالمستقيم

تم توريد العينات بتاريخ ٢٠١٨/٠٢/١٨ إلى الوحدة بمعرفة العميل وعلى مسؤوليته وتم أخذ بيانات العينات من الخطاب الموجه من العميل إلى الوحدة.

الاختبارات المطلوبة :

- اختبار تعيين النسبة المئوية للأمتصاص
- اختبار تعيين مقاومة الضغط



أعد التقرير
م.م / لين زكريا

٢/١

١ شى السرايات - ميدان عبده باشا - العباسية ١١٥١٧ - القاهرة - ت/فاكس : ٢٤٦٧٤٠٢٦
1 El-Sarayati St., Abbasia 11517, Cairo, Tel. & Fax : 24674026

ICPM - CEMENTATIOUS



ALMARASEM

INTERLOCK WORKS

Research Center of
Properties and Testing of Materials
And Quality Control
Engineering Consulting Center
Faculty of Eng. - Ain Shams Univ. **MRC**
وحدة أبحاث
خواص واختبار المواد
وضبط الجودة
مركز الاستشارات الهندسية
كلية الهندسة جامعة عين شمس

رقم التقرير : F 0109/2018
التاريخ : ٢٠١٨/٠٢/٢٤

نتائج الاختبارات

١- اختبار تعيين النسبة المئوية للمنتج:
تم إجراء اختبار تعيين النسبة المئوية للمنتج على عدد (٣) عينات من البلوكات الأسمنتية المفرغة الموردة وكانت نتائج الاختبار كما يلي:

م	الوزن الصالح (جم)	الوزن الجاف (جم)	الوزن المغمور (جم)	نسبة الفراغ (%) (مجم)	الامتصاص (مجم/م ^٣)
١	١٧٦٨١	١٦٧٥٧	٩٠٦١	١٩٤٤	٥,٥١
٢	١٧٣١٢	١٦٦٣٨	٩٧٦٩	٢١٥٣	٦,٦١
٣	١٧٣٩٠	١٦٦٧٤	٩٦٩٤	٢١٢٨	٦,٢٠

٢- اختبار تعيين مقاومة الضغط :

تم تعيين مقاومة الضغط لعدد (٣) عينات من البلوكات الموردة بحالتها وقت التوريد (طبقا للمواصفات القياسية المصرية م.ق.م ١١٩٩٢/١-٢٠٠٥)، وكانت نتائج الاختبار كما يلي:

م	المساحة الصافية (سم ^٢)	الوزن وقت التوريد (كيلو نيوتن)	حمل الانهيار (كيلو نيوتن)	إجهاد الكسر (نيوتن/سم ^٢)
١	١٩,٩	١٦٤٦٠	٣٢٥	٨,٨
٢	٢٠,١	١٦٧٠٥	٣١٥	٨,٦
٣	٢٠,٢	١٦٢٠٠	٣٢٥	٨,٨

* تم حساب إجهاد الكسر على أساس المساحة الصافية لقطع العينة.

مدير الوحدة
د. خالد محمد مرسى

رابع التقرير
م.م / أمين زكريا

أعد التقرير
م.م / أمين زكريا

٢/٢

١ شى السرايات - ميدان عبده باشا - العباسية ١١٥١٧ - القاهرة - ت/فاكس : ٢٤٦٧٤٠٢١
1 El-Sarayat St., Abbasia 11517, Cairo, Tel. & Fax : 24674026

Research Center of
Properties and Testing of Materials
And Quality Control
Engineering Consulting Center
Faculty of Eng. - Ain Shams Univ. **MRC**
وحدة أبحاث
خواص واختبار المواد
وضبط الجودة
مركز الاستشارات الهندسية
كلية الهندسة جامعة عين شمس

رقم التقرير : F 0108/2018
التاريخ : ٢٠١٨/٠٢/٢٤

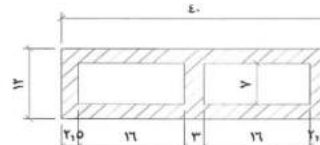
تقرير عن نتائج اختبار الضغط على عينات من البلوكات الأسمنتية المفرغة

المعمل : الشركة الاستشارية للتشخيص والتصنيع (I.C.P.M)
المشروع :

ورد الى وحدة أبحاث خواص واختبار المواد وضبط الجودة - كلية الهندسة جامعة عين شمس - خطاب من الشركة الاستشارية للتشخيص والتصنيع بخصوص إجراء اختبار الضغط على عينات من البلوكات الأسمنتية المفرغة.

العينات الموردة :

- عدد "٦" عينات من البلوكات الأسمنتية المفرغة مفاص حوالى ٢٠٠×١٢×٤٠ سم بأبعاد كما هو موضح بالشكل - مصنع التكون بلوكه.



شكل يوضح متوسط أبعاد البلوكات الموردة بالمستثمر

تم توريد العينات بتاريخ ٢٠١٨/٠٢/١٨ إلى الوحدة بمعرفة المعمل وعلى مسئوليتهم وتم أخذ بيانات العينات من الخطاب الموجه من المعمل إلى الوحدة.

الافتحار المطلوبة :

١- اختبار تعيين النسبة المئوية للمنتج

٢- اختبار تعيين مقاومة الضغط

م.م / أمين زكريا

٢/١

١ شى السرايات - ميدان عبده باشا - العباسية ١١٥١٧ - القاهرة - ت/فاكس : ٢٤٦٧٤٠٢١
1 El-Sarayat St., Abbasia 11517, Cairo, Tel. & Fax : 24674026

Research Center of
Properties and Testing of Materials
And Quality Control
Engineering Consulting Center
Faculty of Eng. - Ain Shams Univ. **MRC**
وحدة أبحاث
خواص واختبار المواد
وضبط الجودة
مركز الاستشارات الهندسية
كلية الهندسة جامعة عين شمس

رقم التقرير : F 0108/2018
التاريخ : ٢٠١٨/٠٢/٢٤

نتائج الاختبارات

١- اختبار تعيين النسبة المئوية للمنتج:
تم إجراء اختبار تعيين النسبة المئوية للمنتج على عدد (٣) عينات من البلوكات الأسمنتية المفرغة الموردة وكانت نتائج الاختبار كما يلي:

م	الوزن الصالح (جم)	الوزن الجاف (جم)	الوزن المغمور (جم)	نسبة الفراغ (%) (مجم)	الامتصاص (مجم/م ^٣)
١	١٣١٠٠	١٢٣٦٦	٧٣٥٩	٢١٥٤	٥,٩٤
٢	١٣١١٢	١٢٤٥٠	٧١٨٧	٢٢١٣	٥,٣٢
٣	١٢٧٤٦	١٢١١٠	٧٢٧٤	٢٢١٣	٥,٢٥

٢- اختبار تعيين مقاومة الضغط :

تم تعيين مقاومة الضغط لعدد (٣) عينات من البلوكات الموردة بحالتها وقت التوريد (طبقا للمواصفات القياسية المصرية م.ق.م ١١٩٩٢/١-٢٠٠٥)، وكانت نتائج الاختبار كما يلي:

م	المساحة الصافية (سم ^٢)	الوزن وقت التوريد (كيلو نيوتن)	حمل الانهيار (كيلو نيوتن)	إجهاد الكسر (نيوتن/سم ^٢)
١	٢٠,٠	١٢١٢٤	٢٦٠	١٠,١
٢	٢٠,٠	١٢٦٤١	٣٤٥	١٣,٤
٣	٢٠,١	١٢٣٥٠	٢٧٠	١٠,٥

* تم حساب إجهاد الكسر على أساس المساحة الصافية لقطع العينة.

مدير الوحدة
د. خالد محمد مرسى

رابع التقرير
م.م / أمين زكريا

أعد التقرير
م.م / أمين زكريا

٢/٢

١ شى السرايات - ميدان عبده باشا - العباسية ١١٥١٧ - القاهرة - ت/فاكس : ٢٤٦٧٤٠٢١
1 El-Sarayat St., Abbasia 11517, Cairo, Tel. & Fax : 24674026



ALMARASEM

ICPM - CEMENTATIOUS

INTERLOCK WORKS

Research Center of
Properties and Testing of Materials
And Quality Control

Engineering Consulting Center
Faculty of Eng. - Ain Shams Univ.

MRC

وحدة أبحاث
خواص واختبار المواد
وضبط الجودة
مركز الاستشارات الهندسية
كلية الهندسة - جامعة عين شمس

رقم التقرير : F 0107/2018
التاريخ : ٢٤ / ٢ / ٢٠١٨

تقرير عن نتائج اختبارات على عينات من الطوب الأسمنتي المصمت

المعمل : الشركة الاستشارية للتأجير والتصنيع
المشروع :

ورد إلى وحدة أبحاث خواص واختبار المواد وضبط الجودة - كلية الهندسة - جامعة عين شمس - خطاب من الشركة الاستشارية للتأجير والتصنيع بخصوص بخصوص إجراء اختبارات على عينات من الطوب الأسمنتي المصمت.

العينات المعروضة :

- عدد "٦" عينات من الطوب الأسمنتي المصمت بأبعاد اسمية ٦x١٢x٢٥ سم - مصنع الكون بلوك.

تم توريد العينات بتاريخ ٢٠١٨/٢/١٨ إلى الوحدة بمعرفة العميل وعلى مسؤوليته وتم أخذ بيانات العينات من الخطاب الموجه من العميل إلى الوحدة.

الاختبارات المطلوبة :

١- اختبار تعيين مقاومة الضغط

٢- اختبار تعيين النسبة المئوية لامتصاص الماء



د. خالد محمد مرسى

Research Center of
Properties and Testing of Materials
And Quality Control

Engineering Consulting Center
Faculty of Eng. - Ain Shams Univ.

MRC

وحدة أبحاث
خواص واختبار المواد
وضبط الجودة
مركز الاستشارات الهندسية
كلية الهندسة - جامعة عين شمس

رقم التقرير : F 0107/2018
التاريخ : ٢٤ / ٢ / ٢٠١٨

نتائج الاختبارات

١- اختبار تعيين مقاومة الضغط :

تم إجراء اختبار الضغط على عدد (٣) عينات من الطوب الأسمنتي المصمت المورد بحالته وقت التوريد (طبقاً للمواصفات القياسية المصرية رقم م.ق. ١٢٩٢-٢٠٠٥) وكانت نتائج الاختبار كما يلي :

م	الأبعاد (مم)			الوزن (كجم)	حمل الانهيار (كيلو نيوتن)	مقاومة الضغط (نيوتن/سم ^٢)
	طول	عرض	ارتفاع			
١	٢٥٠	١١٨	٦١	٣,٩٢٧	٩٢٠	٣١,١٩
٢	٢٥٠	١١٨	٦١	٣,٩١١	٦٣٠	٢١,٣٦
٣	٢٥٠	١١٨	٦١	٣,٩٤٢	٥١٠	١٧,٢٩

- اختبار تعيين النسبة المئوية لامتصاص الماء :

تم إجراء اختبار امتصاص الماء على عدد (٣) عينات من الطوب الأسمنتي المصمت المورد وذلك بعد غمر العينات في الماء لمدة ٢٤ ساعة وكانت نتائج الاختبار كما يلي :

م	الوزن المبلع (جم)	الوزن الجاف (جم)	الوزن المغمور (جم)	نسبة الترسبة (جم/م ^٢)	الامتصاص (%)	الامتصاص (جم/م ^٢)
١	٤٠٤٤	٣٧٥٥	٢٢٦٨	٢١١٤	٧,٧٠	١٦٢,٧٣
٢	٣٩٦٤	٣٦٦٨	٢٢١٦	٢٠٩٨	٨,٠٧	١٦٩,٣٤
٣	٣٧٦٦	٣٤٤٠	٢٠٦١	٢٠٤٧	٧,٩١	١٦١,٨٨



رابع التقرير

أعد التقرير
م.م/ لين زكريا


١ ش السرايات - ميدان عبيد باشا - العباسية ١١٥١٧ - القاهرة - ت/فاكس : ٢٤١٧٤٠٢٦
1 El-Saray St., Abbasia 11517 , Cairo , Tel. & Fax : 24674026

١ ش السرايات - ميدان عبيد باشا - العباسية ١١٥١٧ - القاهرة - ت/فاكس : ٢٤١٧٤٠٢٦
1 El-Saray St., Abbasia 11517 , Cairo , Tel. & Fax : 24674026

INVESTMENT COMPANY FOR PRODUCTION & MANUFACTURING

ICPM - CEMENTATIOUS

Test Report

ARDAMAN - ACE CONSULTING ENGINEERS IN SOIL MECHANICS, FOUNDATIONS & MATERIALS TESTING 4 ABD EL-KAWY AHMED ST., MOHANDESEEN - GIZA TEL.: 33448413 - FAX: 33631719									
Project: عام					File No: 3742				
Client: الإستثمارية للإنتاج والتشييع					Date: 27/3/2017				
SAMPLING AND TESTING CONCRETE MASONRY UNITS AND RELATED UNITS ACCORDING TO EGYPTIAN STANDARDS Nominal dimensions : 40*20*20									
Sample delivery date: 23/03/2017					Brand name : By Client				
					Source of sample : By Client				
Ident. No.	Dry Weight (gm)	Dimensions (cm)					Crushing Load (KN)	Net area Strength (Kg/cm ²)	Shape
		Length	Width	Height	Web	Face width			
1	16937	39.80	20.00	19.90	2.7	2.70	450	137.76	
2	16678	39.90	19.90	20.00	2.8	2.80	400	118.76	
3	17118	39.90	20.00	19.90	2.8	2.80	480	142.16	
	16911.0	39.9	20.0	19.9	2.8	2.8	443.3	132.9	
Note (s): 1- The samples were find <u>complying</u> with ES 1292-1/2005 which defined the net area strength for the unit is 1.41 (N/mm ²) = 35.2 (kg/cm ²) 2- The samples are provided by the client and under his own responsibility.									
Prepared by: Eng. Mariana Mousa					Dept. Manager: Eng. Reda El Raheb				

ARDAMAN - ACE CONSULTING ENGINEERS IN SOIL MECHANICS, FOUNDATIONS & MATERIALS TESTING 4 ABD EL-KAWY AHMED ST., MOHANDESEEN - GIZA TEL.: 33448413 - FAX: 33631719										
Project: عام					File No. : 3742					
Client: الإستثمارية للإنتاج والتشييع					Date : 27/3/2017					
SAMPLING AND TESTING CONCRETE MASONRY UNITS AND RELATED UNITS ACCORDING TO EGYPTIAN STANDARDS Nominal dimensions: 40*20*20										
Source of sample : By Client										
Ident. No.	Dry Weight (gm)	Dimensions (cm)			Equivalent Thickness (mm)	Wet Weight (gm)	Suspended Weight (gm)	Absorption (kg/m ³)	Absorption (%)	Unit Weight (kg/m ³)
		Length	Width	Height						
1	15902	39.9	20.0	20.0	95.5	17212	9592	171.92	8.2	2086.9
2	15685	39.9	19.9	20.0	94.2	16928	9412	165.38	7.9	2086.9
Average	15794	39.9	20.0	20.0	94.8	17070	9502	168.65	8.1	2086.9
Allowable limits: 1- The samples were find complying with ES 1292-1/2005 with Max. allowable absorption (Average of 3 units) = 208 kg/m ³ Note (s): 1- The samples are provided by the client and under his own responsibility.										
Prepared by: Eng. Mariana Mousa					Dept. Manager: Eng. Reda El Raheb					

ICPM - CEMENTATIOUS



ALMARASEM

Test Report

ARDAMAN - ACE CONSULTING ENGINEERS IN SOIL MECHANICS, FOUNDATIONS & MATERIALS TESTING 4 ABD EL-KAWY AHMED ST., MOHANDESEN - GIZA TEL: 33448413 - FAX: 33031719									
Project: عام					File No: 3742				
Client: الاستشارية للإنشاء والتسويق					Date: 27/03/2017				
SAMPLING AND TESTING CONCRETE MASONRY UNITS AND RELATED UNITS ACCORDING TO EGYPTIAN STANDARDS Nominal dimensions : 40*25*20									
Sample delivery date: 23/03/2017					Brand name : By Client				
					Source of sample : By Client				
Ident. No.	Dry Weight (gm)	Dimensions (cm)					Crushing Load (KN)	Net area Strength (Kg/cm ²)	Shape
		Length	Width	Height	Web	Face shell			
1	19055	40.00	24.90	20.00	2.5	2.50	320	93.46	
2	18599	40.00	24.90	19.60	2.4	2.60	305	86.97	
3	18727	39.90	25.00	20.10	2.6	2.50	280	81.25	
Average		40.0	24.9	19.9	2.5	2.5	301.7	87.2	
Note (s): 1- The samples were found complying with ES 1292-1/2005 which defines the minimum net area strength for the unit is 3.45 (N/mm ²) = 35.2 (kg/cm ²) 2- The samples are provided by the client and under his own responsibility.									
Prepared by: Eng. Mariana Mousa					Dept. Manager: Eng. Reda El Ruheb				

ARDAMAN - ACE CONSULTING ENGINEERS IN SOIL MECHANICS, FOUNDATIONS & MATERIALS TESTING 4 ABD EL-KAWY AHMED ST., MOHANDESEN - GIZA TEL: 33448413 - FAX: 33031719										
Project: عام					File No. : 3742					
Client: الاستشارية للإنشاء والتسويق					Date : 27/03/2017					
SAMPLING AND TESTING CONCRETE MASONRY UNITS AND RELATED UNITS ACCORDING TO EGYPTIAN STANDARDS Nominal dimensions: 40*25*20										
Source of sample : By Client										
Ident. No.	Dry Weight (gm)	Dimensions (cm)			Equivalent Thickness (mm)	Wet Weight (gm)	Suspended Weight (gm)	Absorption (kg/m ³)	Absorption (%)	Unit Weight (kg/m ³)
		Length	Width	Height						
1	18716	39.9	24.8	19.9	108.8	20007	11370	149.47	6.9	2167.0
2	18516	39.9	24.9	19.9	109.5	19900	11205	159.17	7.5	2129.5
Average	18616	39.9	24.9	19.9	109.1	19954	11288	154.32	7.2	2148.2
Allowable limits: 1- The samples were found complying with ES 1292-1/2005 with Max. allowable absorption (Average of 3 units) = 208 kg/m ³ Note (s): 1- The samples are provided by the client and under his own responsibility.										
Prepared by: Eng. Mariana Mousa					Dept. Manager: Eng. Reda El Ruheb					

INVESTMENT COMPANY FOR PRODUCTION & MANUFACTURING

Test Report

ARDAMAN - ACE
CONSULTING ENGINEERS IN
SOIL MECHANICS, FOUNDATIONS & MATERIALS TESTING
4 ABD EL-KAWY AHMED ST., MOHANDSEEN - GIZA
TEL.: 33448413 - FAX.: 33031719


Project: عام
Client: الاستشارية للإنتاج والصنيع

File No.: 3742
Date: 27/03/2017

SAMPLING AND TESTING CONCRETE MASONRY UNITS AND RELATED UNITS
ACCORDING TO EGYPTIAN STANDARDS
Nominal dimensions: 25*12*6

Source of sample: By client

Brand name: By client

Ident. No.	Dry Weight (gm)	Dimensions (cm)					Crushing Load (KN)	Net area Strength (kg/cm ²)	Shape
		Length	Width	Height	Web	Face shell			
1	3723	24.90	12.10	5.90	-	-	455	154.04	
2	3726	25.00	12.10	5.90	-	-	445	150.85	
3	3719	24.90	12.10	6.00	-	-	450	152.34	
Average	3723	24.93	12.10	5.93	-	-	450	152.14	

Note (s):
1- The samples were find complying with ES 1292-2/2005 which defined the min. net area strength for the unit is 3.45 (N/mm²) = 35.2 (kg/cm²) and the min. net area strength, for average = 42.3 kg/cm²
2- The samples are provided by the client and under his own responsibility.

Prepared by: Eng. Mariana Mousa
Dept. Manager: Eng. Reda El Raheb

ARDAMAN - ACE

ARDAMAN - ACE
CONSULTING ENGINEERS IN
SOIL MECHANICS, FOUNDATIONS & MATERIALS TESTING
4 ABD EL-KAWY AHMED ST., MOHANDSEEN - GIZA
TEL.: 33448413 - FAX.: 33031719

Project: عام
Client: الاستشارية للإنتاج والصنيع

File No.: 3742
Date: 27/3/2017

SAMPLING AND TESTING CONCRETE MASONRY UNITS AND RELATED UNITS
ACCORDING TO EGYPTIAN STANDARDS
Nominal dimensions: 25*12*6

Source of sample: By Client

Ident. No.	Dry Weight (gm)	Dimensions (cm)			Equivalent Thickness (mm)	Wet Weight (gm)	Suspended Weight (gm)	Absorption (kg/m ³)	Absorption (%)	Unit Weight (kg/m ³)
		Length	Width	Height						
1	3711	25.0	12.0	5.9	123.0	4039	2225	180.82	8.8	2045.8
2	3614	24.9	12.1	5.9	119.8	3941	2181	185.80	9.0	2053.4
Average	3663	25.0	12.1	5.9	121.4	3990	2203	183.31	8.9	2049.6

Allowable limits:
1- The samples were find complying with ES 1292-1/2005 with Max. allowable absorption (Average of 3 units) = 208 kg/m³
Note (s):
1- The samples are provided by the client and under his own responsibility.

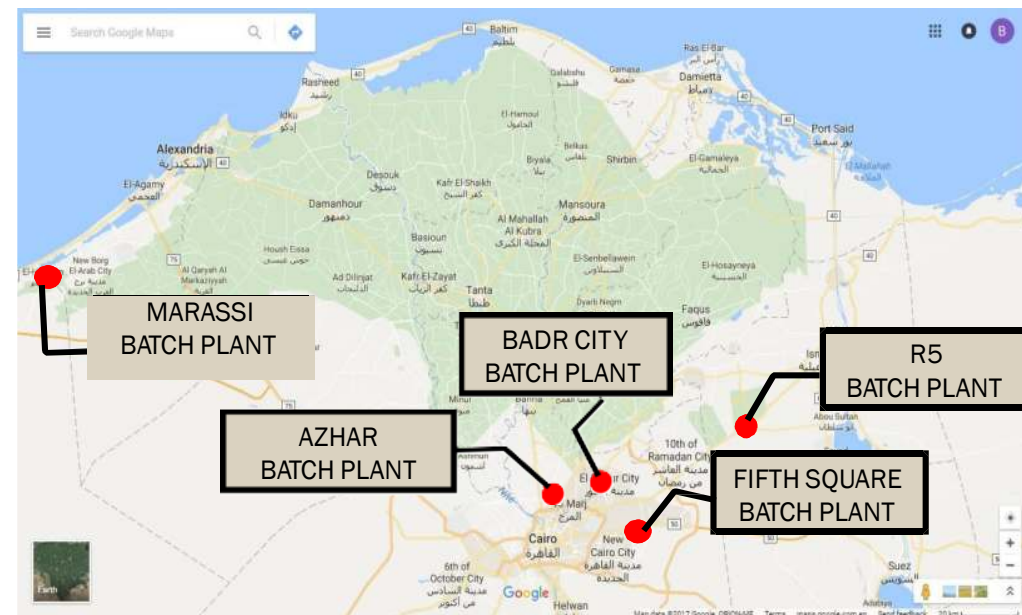
Prepared by: Eng. Mariana Mousa
Dept. Manager: Eng. Reda El Raheb

ARDAMAN - ACE

ICPM - Ready Mix Concrete

A fully integrated system of required equipment to produce ready mix concrete with an annual production capacity that can produce up to 420,000 m³/ year. Ready Mix Concrete batch plants furnished with the following:-

- 9 Batch plants/concrete mixing stations with pumps ranging from 40m³/hr to 165 m³/hr
- 46 Transit Mixers ranging from 8 m³ to 12 m³
- 14 concrete truck mounted pumps with heights varying from 36 m to 52 m
- Loaders ,Electric Generators and chillers
- Quality assurance plants



ICPM - Ready Mix Concrete



ALMARASEM



INVESTMENT COMPANY FOR PRODUCTION & MANUFACTURING



ALMARASEM

**INVESTMENT CO. FOR PRODUCTION & MANUFACTURING -
ICPM
ALMARASEM AFFILIATED COMPANY**



الشركة الإستثمارية للإنتاج والتصنيع

INVESTMENT CO. FOR PRODUCTION & MANUFACTURING

Badr City – Industrial Zone (Cairo – Swiss) Road

Tel.: + (02)23108095 – (02)23108236 – (02)23108378 – (02)23108376

E-mail: infoicpmegypt@icpm-eg.com

ADD.: BADR CITY – INDUSTRIAL ZONE# 6 (ROUBAIKY ROAD FROM CAIRO –SUEZ ROAD)

**TEL#: (+202) - 23108095 / 23108236
23108378 / 23108376**

E-MAIL: infoicpmegypt@icpm-eg.com

Website : www.icpmegypt



INVESTMENT COMPANY FOR PRODUCTION & MANUFACTURING